




Here at adidas we are the only Combat Sports brand offering a complete range of training equipment and apparel for the Combat Sports players. All of the adidas product is researched, developed and combat tested by professional athletes... We guarantee it.

[www.combat-sports.net](http://www.combat-sports.net)

 [adidasboxing](https://www.instagram.com/adidasboxing)

 [adidas.cs](https://www.facebook.com/adidas.cs)

 [adidascombatsports](https://www.youtube.com/adidascombatsports)

 [cs\\_adidas](https://twitter.com/cs_adidas)

© adidas 2020. The 3-Stripes logo and the 3-Stripes mark are registered trademarks of the adidas Group.  
Photo credits: Shunya Sen - Anthony Geathers - Aaron - Doubled, all rights reserved. Non contractual document : design or color of products contained in this catalog may vary in production. Edition September 2020.

#### DOUBLE D

adidas worldwide licensee martial arts & boxing  
22 allée du 1<sup>er</sup> Mai - 77183 Croissy-Beaubourg - FRANCE  
Tel. +33.1.64.73.00.03 - Fax +33.1.64.73.00.04

  
**adidas**  
BOXING

CATALOG 2020/21





## TECHNOLOGIES

### **HYBRID**

Optimize performance and safety  
The best of adidas technologies into  
the Hybrid range.

### **SPEED**

Unique full moulded foam block covering from  
top to wrist, combined with a multi-layered foam  
padding, to optimize the speed and performance.

### **I-COMFORT +**

Technology that enhances protection through an  
anti-skid and hygienic covering and comfortable,  
hypoallergenic materials.

### **AEROREADY**

Technology that provides ventilation and regulates  
temperature and perspiration thanks to highly  
efficient materials that optimise performance.

### **PU3G**

Material that looks, feels and performs like  
leather. Extremely strong, PU3G can continually  
absorb perspiration while remaining supple and  
impervious to cracking.



Approved by  
NYC Athletic / Boxing Commission

Approved by  
California Athletic / Boxing Commission



### adiSTAR 750 PRO - adiSBG750

- Genuine leather outer material
- Horse hair/foam combo padding
- Memory foam on the knuckle area
- Neoprene laminated with leather on the outer side
- Air vents for breathability
- Cuff has a clear PVA sewn over the top to protect from tape

**Colors:** Customizable.

**Sizes:** 8 - 10 oz.

#### TOP FEATURES

Designed for pros

Customize your gloves

Fully handcrafted gloves

Superior leather outer material

Hundreds of Colors combinations



## THE ADIDAS PRO BOXER

First time in the combat sport history adidas proudly announces the use of Visco Elastic foam in its 500 Pro series. The “Cloud MVE” foam is a new cutting-edge technology which brings revolution into the combat sport industry.

This unique mixture infused with Memory foam has the following key features:

- Impact protection
- Distributes pressure
- Soft & flexible
- High shock-absorbency



PRO BOXING GLOVES



### adiSPEED 501 PRO - *adiSBG501PRO*

- Genuine cowhide leather
- Polyester lining for comfort
- Multi-layered padding with Cloud MVE foam using unique mixture infused with Memory foam
- Rigid hook&loop strap & additional elasticated part

**Colors:** Black/White - Blue/White - Red/White - White/Black -  
Black/Gold Met/Silver Met - Red/White/Green Met - White/Red Met/Blue Met/Silver Met.

**Sizes:** 10 - 12 - 14 - 16 - 18 oz.

### TOP FEATURES

Designed for pros

Maximum safety

Stability to the wrist

Designed for powerful punch



JAMEL HERRING  
WBO WORLD CHAMPION





### adISPEED 501 PRO "FULL METALLIC" - *adiSBG501*

- Genuine cowhide leather
- Polyester lining for comfort
- Multi-layered padding with Cloud MVE foam using unique mixture infused with Memory foam
- Rigid hook&loop strap & additional elasticated part

**Colors:** Red Met/Gold Met/Silver Met - Blue Met/Red Met/Silver Met - Gold Met/Silver Met/Black Met - Black Met/Silver Met/Gold Met.

**Sizes:** 10 - 12 - 14 - 16 - 18 oz.

### TOP FEATURES

Designed for pros

Maximum safety

Stability to the wrist

Designed for powerful punch



JAMEL HERRING  
WBO WORLD CHAMPION





- Genuine cowhide leather
- Polyester lining for comfort
- Multi-layered padding with Cloud MVE foam using unique mixture infused with Memory foam
- Lace-up closure

**Colors:** Black/White - Blue/White - Red/White - White/Black -  
Black/Gold Met/Silver Met - Red/White/Green Met/White - Red Met/Blue Met/Silver Met.

**Sizes:** 10 - 12 - 14 - 16 - 18 oz.

Designed for pros  
Maximum safety  
Stability to the wrist  
for faster movements







JAMEL HERRING  
WBO WORLD CHAMPION



### adisPEED 500 PRO "FULL METALLIC" - *adiSBG500*

- Genuine cowhide leather
- Polyester lining for comfort
- Multi-layered padding with Cloud MVE foam using unique mixture infused with Memory foam
- Lace-up closure

**Colors:** Red Met/Gold Met/Silver Met - Blue Met/Red Met/Silver Met -  
Gold Met/Silver Met/Black Met - Black Met/Silver Met/Gold Met

**Sizes:** 10 - 12 - 14 - 16 - 18 oz.

### TOP FEATURES

- Designed for pros
- Maximum safety
- Stability to the wrist
- Designed for faster movements





SHO KIMURA  
WBO WORLD CHAMPION



Approved by  
Japanese boxing commission



### Shōri Fight gloves - *adiSH0700FG*

- Leather construction for extreme durability
- Sponge foam padding for optimal shock absorption
- Short cuff for an ultra-firm tightening at wrist
- Compact hand compartment
- Designed with two tones at palm (2 parts)
- Japanese style fight glove that meets standards of the 'Japanese Boxing Athletic Commissions'
- Made in Japan gloves produced in small batch production for optimum quality

**Colors:** Black/White - Red/White - Blue/White.

**Sizes:** 8 - 10 oz.



### Shōri Headguard - *adiSH0700HG*

- 'Made in Japan' headgear with top graded leather quality
- PU lining for easy cleaning
- Multi-layers foam padding with strong resistance to impact
- Optimized level of shock absorption throughout the headgear
- Rigid bar on the front of headgear for maximum protection
- Wide rigid hook & loop strap closing system at the back & at chin
- Side release buckle chin strap for quick easy adjustment

**Colors:** Black/Red/White.

**Sizes:** S - M - L - XL.





# ADIDAS MYGLOVES

## CUSTOMIZE YOUR GLOVES

(Examples)



**Pro Series Speed Punch 700**  
Foam construction



**Pro Series Speed Punch 750**  
Horse hair construction



**Pro Series Speed Punch 780**  
Mixed foam & horse hair construction



**Pro Series Speed Punch 800 MX**  
'Mexican style'  
Mixed foam & horse hair construction



### Boxing Pro Gloves "My Gloves"

"Customize your leather-made glove!"  
Select glove parts, one at a time and choose its color.

Three styles of gloves are provided:

- . Lace-up Fight Gloves
- . Lace-up Training Gloves
- . Hook+loop Training Gloves

Sizes:

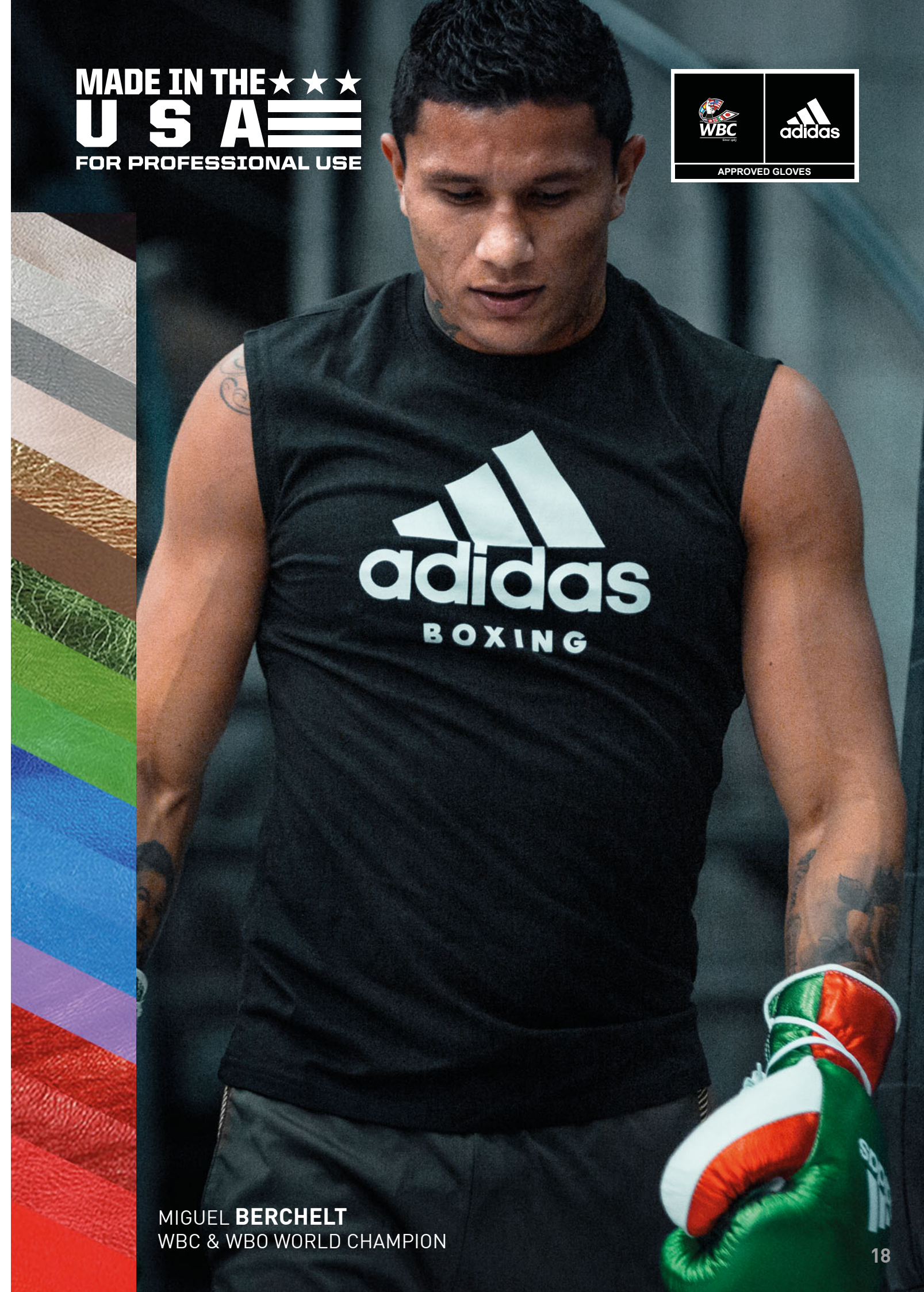
Training gloves: 8 - 10 - 12 - 14 - 16 - 18 - 20 oz.

Pro gloves: 8 - 10 oz.



**Pro Series Speed Protect 700 JPX**  
Foam construction

MADE IN THE **U S A**   
FOR PROFESSIONAL USE



**MIGUEL BERCHELT**  
WBC & WBO WORLD CHAMPION





### SPEED 350 PRO - *adiSBG350*

- Genuine outside leather, outstanding finish
- Polyester lining for comfort
- One piece injection foam moulded padding
- Rigid hook&loop strap closing system

**Colors:** Black/Gold Met - Red/White/Green Met - White/Red/Blue Met.

**Sizes:** 12 - 14 - 16 - 18 oz.

#### TOP FEATURES

- Designed for pros
- Firm tightening at wrist
- Strong foam construction
- Designed for fast movements



ALYCIA **BAUMGARDNER**  
WBC WORLD CHAMPION



PRO BOXING GLOVES



### adiPOWER 500 PRO - adiH500

- Genuine outside leather, outstanding finish
- Polyester lining for comfort
- Multi-layered foam padding
- Memory foam
- Traditional lace-up closure

**Colors:** Black/Gold Met - Blue/White - Red/White - Black/White -  
Black/Gold Met/Silver Met - Red/Blue Met/Silver Met - White/Black/Silver Met.

**Sizes:** 10 - 12 - 14 - 16 - 18 oz.

#### TOP FEATURES

Designed for pros

Optimized comfort

Strong foam construction

Designed for powerful impact



ABNER MARES  
WBC WORLD CHAMPION





**adiPOWER 500 PRO "FULL METALLIC" - adiH500**

- Genuine outside leather, outstanding finish
- Polyester lining for comfort
- Multi-layered foam padding
- Memory foam
- Traditional lace-up closure

**Colors:** Gold Met/Black Met - Blue Met/Red Met/Silver Met - Red Met/Silver Met.  
**Sizes:** 10 - 12 - 14 - 16 - 18 oz.

**TOP FEATURES**

- Designed for pros
- Optimized comfort
- Strong foam construction
- Designed for powerful impact





### PRO Headguard - adiPHG01

- Genuine outside leather, outstanding finish
- 'Amara' lining for comfort & anti-slip effect
- Multi-layers protective & resistant foam; padded cheeks
- Traditional lace-up closing system at back & on top of headgear

**Colors:** Black/White - Black/Gold Met - White/Black - White/Red - Red/ Green Met/White.

**Sizes:** S - M - L - XL.



#### TOP FEATURES

Designed for pros

Firm tightening

Ergonomic shape

Thick absorbing foam



### PRO Headguard - adiPHG01

- Genuine outside leather, outstanding finish
- 'Amara' lining for comfort & anti-slip effect
- Multi-layers protective & resistant foam; padded cheeks
- Traditional lace-up closing system at back & on top of headgear

**Colors:** Red Met/ Gold Met / Silver Met - Blue Met / Red Met/ Silver Me  
Gold Met / Silver Met / Black Met - Black Met / Silver Met / Gold Met

**Sizes:** S - M - L - XL.



### PRO Groin guard - adiPGG01

- Genuine cowhide leather
- Polyester lining for comfort
- One piece injection foam moulded & rigid protective cup
- Dual closing system with elasticated strap & cords

**Colors:** Black/White - Blue/White - Red/White - White/Black White/Red - Red/White.

**Sizes:** S - M - L - XL.



#### TOP FEATURES

Designed for pros

Optimal protection

Dual tightening system

Protective materials



### PRO Groin guard - adiPGG01

- Genuine cowhide leather
- Polyester lining for comfort
- One piece injection foam moulded & rigid protective cup
- Dual closing system with elasticated strap & cords

**Colors:** Red Met/ Gold Met / Silver Met - Blue Met / Red Met/ Silver Met  
Gold Met / Silver Met / Black Met - Black Met / Silver Met / Gold Met.

**Sizes:** S - M - L - XL.







### PRO Focus mitt - *adiFP01*

- Curved focus mitt made of resistant leather
- Perforated leather at back for air ventilation & comfort feel dry
- Layered foam construction for absorption of impacts
- Ergonomic grip ball at palm to avoid slip effect

**Colors:** Black/Gold - Black/White.

**Sizes:** (aprox.) 20,5 x 16 x 5 cm.



### SPEED Micro Air Focus Mitts - *adiSP550FM*

- Premium cowhide leather construction
- Perforated leather fingers
- Multi-layered padding with low density foam core
- Extra wrist support
- Padded fingers protector

**Colors:** Black/White - Red/White - Blue/Red/White - White/Black.



### PRO Precision sticks - *adiBTS03*

- Resistant PU outer material & nylon strap
- Solid handle in order to give the best grip for the fast & precision exercises
- Inside made of highly resistant & light foam
- Designed for coaches & the intensive use

**Colors:** Black/White - Black/Gold.

**Size:** 39 x 6 x 2,2 cm.



### PRO Target - *adiBTM01*

- Outside leather material & nylon strap
- Ergonomic handle in order to give the best training tool and an optimal grip to the coaches
- Inside made of highly resistant and light foam
- Designed for coaches & the intensive use

**Colors:** Black/Gold Met - Black/White - White/Red - White/Black.

**Size:** 42 cm.



### PRO Striking sticks - *adiSSS01*

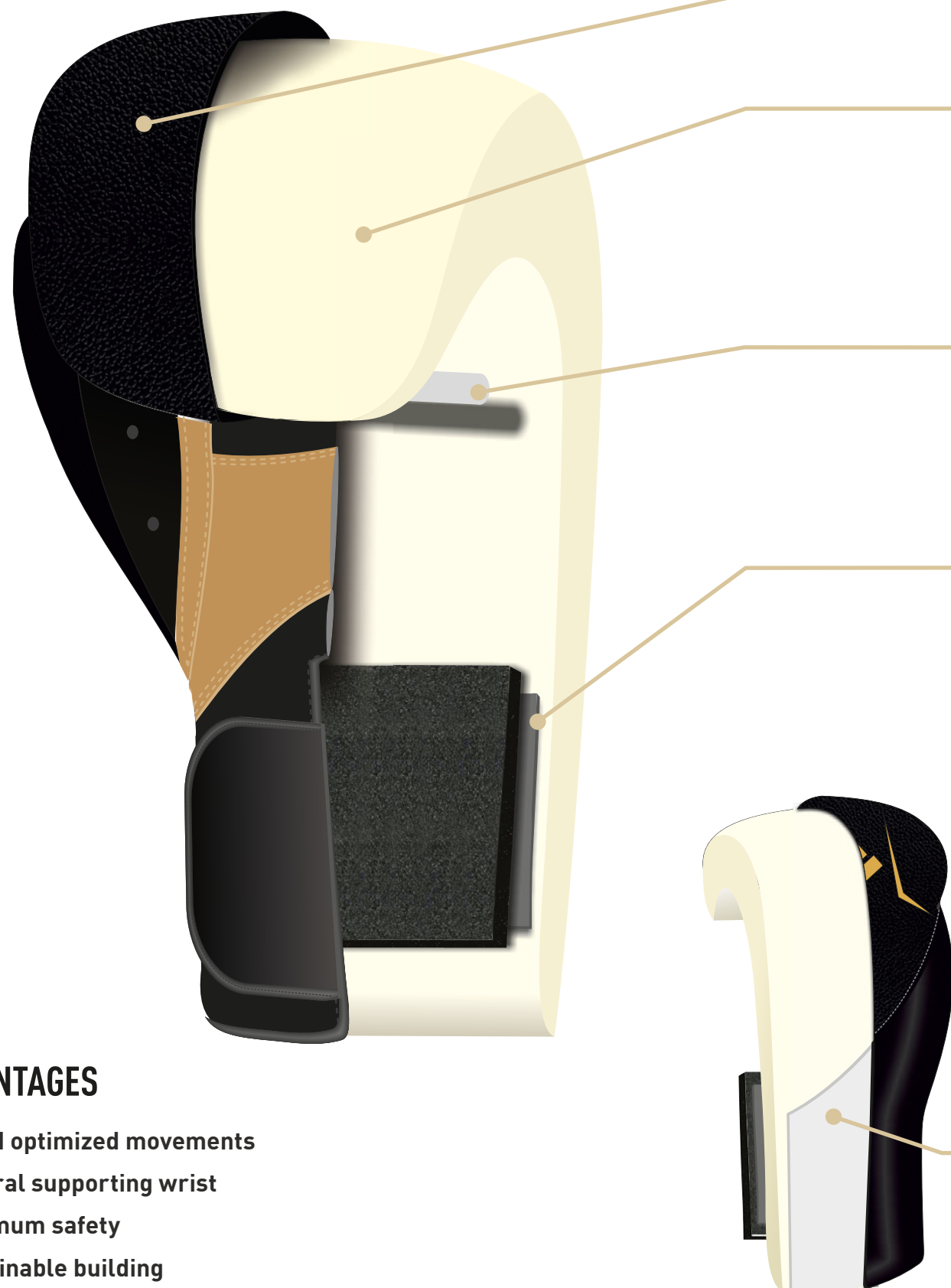
- Resistant PU outer material & nylon strap
- Ergonomic handle with tubular shape in order to give a firm grip for the fast & precision exercises
- Inside made of light and highly resistant injected foam
- Designed for coaches & the intensive use

**Colors:** Black/White - Black/Gold.

**Size:** 55 cm.



# SPEED



## ADVANTAGES

- Speed optimized movements
- Integral supporting wrist
- Maximum safety
- Sustainable building

### Superior Leather

Grade 'AAA' leather lined for extra durability.

### Praesidium foam

Optimise shock absorption & the blunt of impact over the knuckles.

### Tubular Power grip

Provides an optimized grip and fist power with reinforced protection.

### IntegralX® 'one-piece' mould technology

Unique 'integralX®' mould construction for total wrist support - optimized thumb positioning to limit injuries.

### 'Equilibrium Ultimate' Foam

High-density and light foam ensures the impact absorption and distributes the force throughout the product



FRANCISCO OCHOA  
US PRO BOXER





**MERCITO GESTA**  
**WBO NABO TITLE**



**SPEED 175 - adiSBG175 2.0**

- Genuine outside leather, outstanding finish
- One piece injection foam mould resistant to impact
- Inside soft lining for comfort
- Rigid hook&loop strap closing system

**Colors:** Red/White - Blue/White - Black/White - White/Black.

**Sizes:** 8 - 10 - 12 - 14 - 16 oz.







### SPEED 100 - *adiSBG100*

- Outside PU material
- Aeroready technology located at palm for dry feel
- One-piece injection moulded foam padding for homogeneous shock absorption
- Rigid strap plus hook&loop closure

**Colors:** Black/Gold - Black/White - Black/Core Red - White/Gold - Solar Red/Silver - Solar Yellow/Blue.

**Sizes:** 6 oz (kids) / 8 - 10 - 12 - 14 - 16 oz.

**AEROREADY**



### SPEED 50 - *adiSBG50*

- Outside PU material
- One-piece injection moulded foam padding
- Korean lining for comfort and easy slip-in
- Elastic and strap closing system

**Colors:** Black/Gold - Black/White - White/Gold - Black/Solar Red - Shock Pink/Silver - Solar Red/Silver - Solar Yellow/Blue.

**Sizes :** 4 - 6 oz (kids) / 8 - 10 - 12 - 14 - 16 oz.



### SPEED Women 100 - *adiSBGW100*

- Outside PU material
- Aeroready technology located at palm
- One-piece injection moulded foam padding for homogeneous shock absorption
- Rigid strap with hook&loop closure
- Ergonomic & narrower shape designed for women/girls

**Colors:** Solar Red/Black/Silver - Shock Pink/White/Silver.

**Sizes :** 8 - 10 oz.

#### TOP FEATURES

Narrower shape for women hands

One piece foam mould

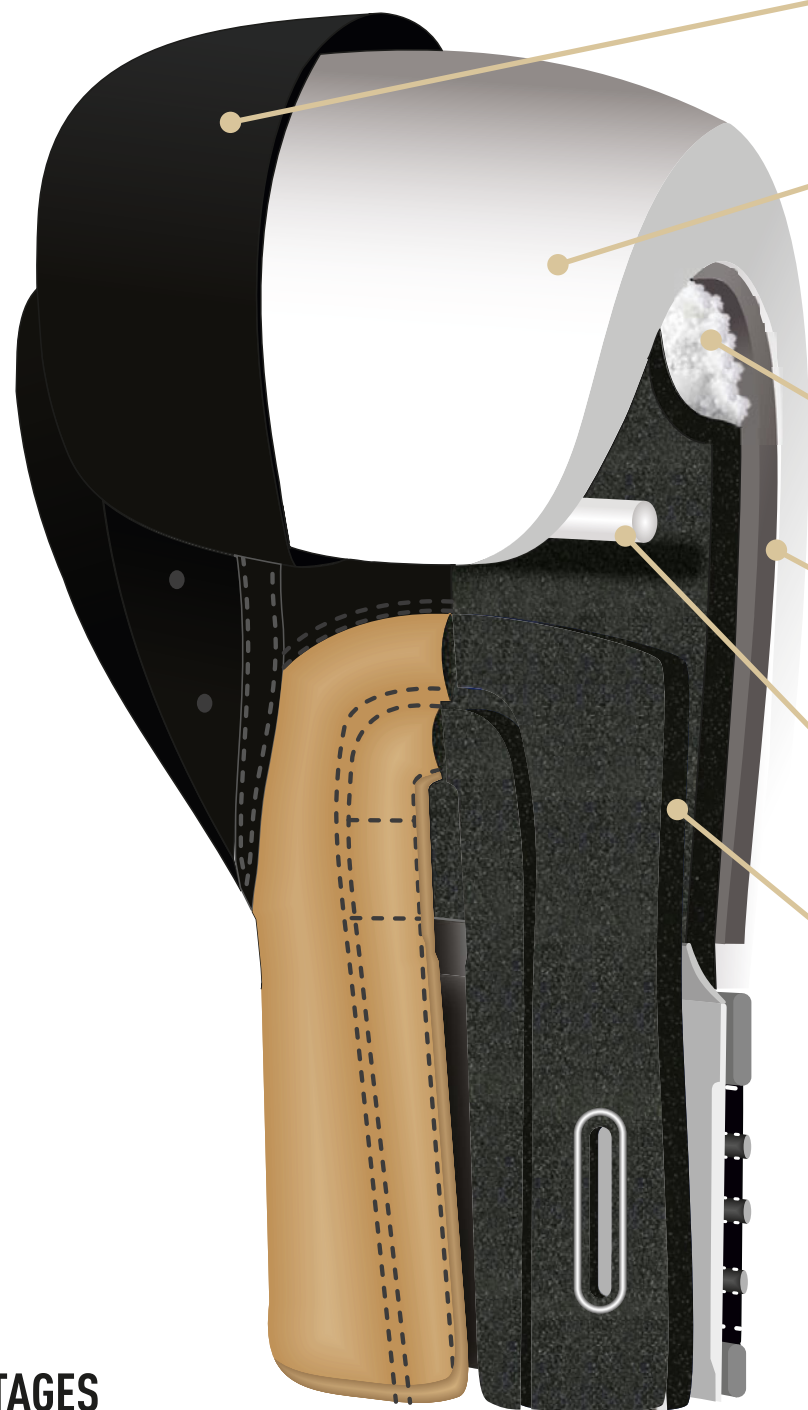
Strong stability to the wrist

Ventilated palm

**AEROREADY**



# HYBRID



## ADVANTAGES

- New multi layer foam integrating unique dampening
- New shape for best punch
- Unique closing system
- Maximum safety
- Durable construction

### Superior Leather

Grade 'AAA' leather lined for extra durability

### Praesidium foam

Optimise shock absorption & the blunt of impact over the knuckles. Optimize protection for the boxer and his sparring partner.

### 'Pro Hollow' Fiber

'Ultraflex' special foam with high resilience ensuring superior rebound.

### 'Equilibrium Ultimate' Foam

The high density and lightweight infill ensures impact absorption & distributes force through the product.

### Tubular Power grip

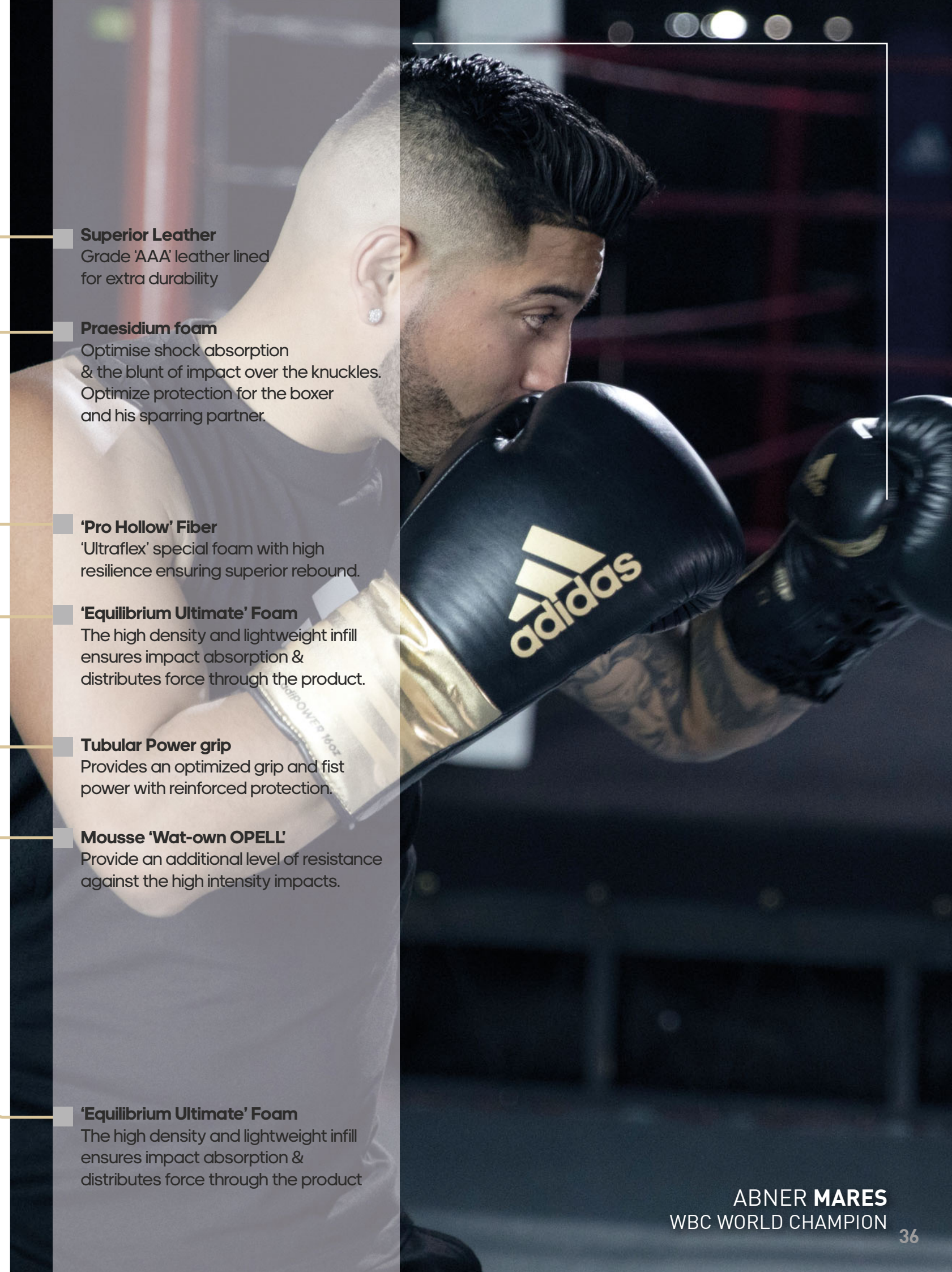
Provides an optimized grip and fist power with reinforced protection.

### Mousse 'Wat-own OPELL'

Provide an additional level of resistance against the high intensity impacts.

### 'Equilibrium Ultimate' Foam

The high density and lightweight infill ensures impact absorption & distributes force through the product



ABNER MARES  
WBC WORLD CHAMPION





### Hybrid 750 Boxing Pro Fight gloves - adiH750FG

- Premium cowhide leather construction
- Multi-layered padding with Cloud MVE foam
- Contoured design palm offering more space, flexibility and hand support
- Lacing closure

**Colors:** Black/White - Red/White - Blue/Red/White - White/Black.

**Sizes:** 8 - 10 - 10 XL oz.



### HYBRID 350 Elite Boxing training gloves - adiH350

- Premium cowhide leather construction
- Perforated leather palm
- Multi-layered padding with Cloud MVE foam
- Satin-like lining
- Innovative Dual Speed lace strap closure
- Extended cuff design giving extra wrist support
- Innovative « Duo Speed Lace » closure allows an optimal adjustment of the glove and perfect wrapping of the hand, in a simple and quick way, making the fit more precise and customized.

**Colors:** Black/White - Red/White - Blue/Red/White - White/Black.

**Sizes:** 12 - 14 - 16 - 18 oz.







### Hybrid 400 "Customizable " Glove - *adiH400PL*

- Outside genuine cowhide leather
- Multi-layered foam & 'Hollow Fiber' pro padding
- Tafeta lining band at cuff for optimal comfort
- Air vents at palm for better breathability

**Colors:** Customizable  
**Sizes:** 8 - 10 oz

#### TOP FEATURES

Fully customizable (colors)

Multi layers foam

Strong & resistant leather

Optimal comfort



### HYBRID 300 - *adiH300*

- Genuine cowhide leather for durability
- Satin-like lining for comfort and easy slip-in
- Multi-layered foam padding integrating unique dampening
- Ergonomic fit shape for powerful and fast punch
- Innovative cuff design for a better wrist support
- Innovative closing system thanks to rigid hook&loop strap for firm and secure closure and tightening

**Colors:** Red/White - Blue/White - Black/Gold - Black/White.  
**Sizes:** 8 - 10 - 12 - 14 - 16 - 18 - 20 oz.

#### TOP FEATURES

Unique foam dampening

Maximum safety

Innovative closing system

Designed for powerful punch





### HYBRID 200 - adiH200

- Genuine buffalo leather material and PU material at palm
- Tafeta lining for comfort and easy slip-in
- Multi-layered foam padding integrating unique dampening
- Ergonomic shape for powerful and fast punch
- Large rigid hook&loop strap for firm tightening and maximum safety

**Colors:** Red/White - Blue/White - Black/Gold - Black/White.

**Sizes:** 8 - 10 - 12 - 14 - 16 - 18 - 20 oz.



### HYBRID 100 - adiH100

- PU outside material
- Korean type lining for comfort and easy slip-in
- Injection moulded foam padding integrating unique dampening
- Rigid hook&loop strap & elasticated part closing system
- Durable construction

**Colors:** Black/Gold - Black/White - Black/Core Red - Black/Mystery Ink - Blue/White - Red/White.

**Sizes:** 4 - 6 oz (Kids) / 8 - 10 - 12 - 14 - 16 oz.



### HYBRID 65 - adiH65

- One piece injection moulded foam padding for optimal wrist support
- Aeroready Technology for better comfort feel dry
- Integral supporting wrist
- Rigid strap with hook&loop closure
- Maximum safety

**Colors:** Black/White - Black/Gold - Core Red/Mystery Ink/Black - Mystery Ink/Core Red/Black.

**Sizes :** 6 (kids) / 8 - 10 - 12 - 14 - 16 oz.

### AEROREADY



AARON MC KENNA  
ADIDAS BOXER





### HYBRID Dynamic fit 100 - *adiHDF100*

- Korean lining for comfort and easy slip-in
- Injection moulded foam padding
- Ergonomic & narrower shape designed for women
- Large rigid hook&loop strap & elastic closing system
- Maximum safety

#### TOP FEATURES

Narrower shape

2 pieces mould foam

Inner comfort lining

**Colors:** Black/Shock pink - Black/White.  
**Sizes :** 6 (kids) / 8 - 10 - 12 - 14 oz.



### AEROREADY

### Washable training gloves - *adiHBWG01*

- Outside neoprene & PU materials make the gloves washable\* (\*by hand)
- Aeroready technology located at palm for dry feel
- Newly developed multi-layers EVA foam provides an homogeneous level of shock absorption
- Wrap around stretch bandage for optimal adjustment

**Colors:** Black/Gold - Black/White - Black/Shock pink.  
**Sizes:** S/M - L/XL.



### Bag gloves "Open thumb" - *adiHBG750T*

- Outside PU & PU3G 'Maya' resistant materials
- Inside Korean type lining for comfort and easy slip-in
- Aeroready technology located at palm for dry feel
- One-piece injection moulded foam for optimal shock absorption
- Rigid hook&loop strap part closing system & opened thumb

**Colors:** Black/Gold - Black/White - Black/Core Red - Black/Mystery Ink.  
**Sizes:** S/M - L/XL.



### AEROREADY



### HYBRID 50 - *adiH50*

- PU material
- Korean type lining for comfort and easy slip-in
- Injection moulded foam padding integrating unique dampening
- Rigid hook&loop strap & elasticated part closing system
- Durable construction

**Colors:** Black/Gold - Black/Core Red - Black/White.  
**Sizes :** 4 - 6 oz (kids) / 8 - 10 - 12 - 14 - 16 oz.



### AEROREADY

### Boxing gloves - *adiBTKA02G*

- Resistant PU material
- Molded & mixed foams
- Aeroready technology located at palm for dry feel
- Inside lining for comfort at training
- Rigid strap plus hook & loop closing system

**Colors:** Black - Red/Black - Blue/Black.  
**Sizes :** Youth S (4) - Youth M (6) / XS (8) - S (10) - M (12) - L (14).



### AEROREADY

### Bag gloves - *adiHBG75*

- Outside PU & PU3G 'Maya' resistant materials
- Korean type lining for comfort and easy slip-in
- Aeroready technology located at palm for dry feel
- One-piece injection moulded foam for optimal shock absorption
- Rigid hook&loop strap closure & opened thumb

**Colors:** Black/Gold/Silver - Black/White/Silver  
Black/Core red/Silver - Black/Mystery Ink/Silver.  
**Sizes:** S/M - L/XL.



### Women bag gloves - *adiHWBG01*

- PU outside material
- Inside Korean type lining for comfort and easy slip-in
- Aeroready technology located at palm for dry feel
- One-piece injection moulded foam for optimal shock absorption
- Rigid hook&loop strap closure

**Colors:** Black/Shock Pink/Silver.  
**Sizes:** S/M - L/XL.







### PERFORMER Boxing glove - *adiBC01*

- Genuine cowhide leather and PU material at palm
- Injection moulded foam padding for homogeneous absorption of impacts
- Air vents at palm for better breathability
- Elasticated hook&loop strap for easy adjustment and tightening

**Colors:** Black/White.

**Sizes:** 8 - 10 - 12 - 14 - 16 oz.



### Kids boxing glove "No Rigid Cuff" - *adiBK01*

- Resistant PU material construction
- Injection moulded foam padding for optimal absorption of impacts
- Air vents at palm for better breathability
- Wide elasticated cuff for an easy & quick adjustment

**Colors:** Red - Blue.

**Sizes:** 4 - 6 - 8 oz.



**JAMEL HERRING**  
WBO WORLD CHAMPION





### HYBRID 150 Training gloves - adiH150TG

- PU external material
- 3D Mesh palm
- Injection PU molded foam
- Hook & look rigid strap
- Unique cuff design for better wrist support

**Colors:** Black/White - Red/White - Blue/Red/White - White/Black.

**Sizes:** 8 - 10 - 12 - 14 - 16 oz.



**AEROREADY**



### HYBRID 150 Women's Training gloves - adiH150TGW

- PU external material
- 3D Mesh palm
- Injection PU molded foam
- Hook & look rigid strap
- Unique cuff design for better wrist support

**Colors:** Collegiate Navy/Black - Collegiate Burgundy/White.

**Sizes:** 8 - 10 - 12 oz.



**AEROREADY**



### HYBRID 150 Boxing headgear - adiH150HG

- PU & 3D mesh external materials
- Multi-layered foam padding
- Hook & look chin and back strap

**Colors:** Black/White - Red/White - Blue/Red/White - White/Black.

**Sizes:** S, M, L, XL.



**AEROREADY**



### HYBRID 150 Focus Mitts - adiH150FM

- PU external material
- 3D Mesh palm
- Multi-layered foam padding
- Extra wrist support
- Padded fingers protector
- Hook & look chin and back strap strap

**Colors:** Black/White - Red/White - Blue/Red/White - White/Black.



**AEROREADY**







### Ultimate fight gloves - adiCSG041

- Hitting area in genuine leather, other parts in PU
- Lining made of quick drying and anti-slip fabric I-Comfort+
- Padding made of shaped lightweight EVA foam with gel
- Smaller wrap around PU/hook&loop strap

**Colors:** Black/White - Black/Mystery ink - Black/Silver - Core red/Mystery ink - Black/Solar blue - Black/Core red.

**Sizes:** S - M - L - XL.



### AEROREADY Fight gloves - adiCSG042

- Aeroready moisture wicking palm technology
- Padding made of shaped lightweight EVA foam
- Smaller wrap around PU/hook&loop strap

**Colors:** Black/Gold - White/Gold - Black/Solar red - Solar yellow/Dark blue - Solar red/Black/Silver Shock pink/white/Silver.

**Sizes:** S/M - L/XL.



### Ultimate fight gloves - adiCSG041M

- PU & PU3G 'Maya' resistant materials
- Lining made of quick drying and anti-slip fabric I-Comfort+
- Padding made of shaped lightweight & ultra-resistant EVA foam
- Wrap around PU/hook&loop strap

**Colors:** Black/Gold/Silver - Black/White/Silver Black/Core Red/Silver - Black/Mystery Ink/Silver.

**Sizes:** S/M - L/XL.



### Ultra compact bag glove "Gel padded" adiHCBG01

- Outside PU material
- Korean type lining for comfort and easy slip-in
- Injection moulded foam padding integrating unique dampening
- Wrap around PU/hook&loop strap

**Colors:** Black/Gold/Silver - Black/White/Silver - Mystery Ink/Core Red/Silver - Core Red/Mystery Ink/Silver.

**Sizes:** S - M - L - XL.



### Grappling gloves - adiCSG07

- PU material
- Lining made of raised polyester fabric for comfort
- Pre-curved EVA foam padding
- Wrap around PU/hook&loop strap
- Strong level of shock absorption for an optimal safety to the user

**Colors:** Black/Solar Blue - Solar Blue/White - Black/Core Red.

**Sizes:** S - M - L - XL.



### Grappling gloves - adiCSG08

- PU material
- Lining made of raised polyester fabric for comfort
- Pre-curved EVA foam padding
- Wrap around PU/hook&loop strap
- Strong level of shock absorption for an optimal safety to the user

**Colors:** Black/Solar blue - Solar blue/White - Black/Core red.

**Sizes:** S - M - L - XL.



### Training grappling glove - adiCSG061

- PU resistant materials
- Lining made of I-Comfort+ quick drying and anti-slip material
- Lightweight & ultra-resistant EVA foam padding
- Wrap around PU/hook&loop strap

**Colors:** Black/White - Black/Mystery Ink - Black/Core Red - Black/Gold.

**Sizes:** S - M - L - XL.



### Ultimate Fight Gloves - adiCSG091

- PU resistant materials
- Lining made of quick drying and anti-slip fabric I-Comfort+
- Lightweight & ultra-resistant EVA foam padding
- Wrap around PU/hook&loop strap

**Colors:** White/Black - Blue/Black - Red/Black.

**Sizes:** S - M - L - XL.







### PRO Men's groin guard - *adiBP111M*

- PU & PU3G 'Maya' resistant materials
- Thick padding made from high-density EVA foam providing optimal safety to boxer, rigid cup\* (\*cannot be removed)
- Lining made of I-Comfort+ quick drying and anti-slip material
- Elastic straps and hook&loop at the back for firm tightening

**Colors:** Black/White/Silver - Core red/Mystery ink/Silver - Mystery ink/Core red/Silver - Black/Gold/Silver.

**Sizes:** XS/S - M/L - XL/XXL.



### Training grappling glove - *adiCSG062M*

- PU & PU3G 'Maya' resistant materials
- Lining made of I-Comfort+ quick drying and anti slip material
- Padding made of shaped lightweight & ultra-resistant EVA foam
- Wrap around PU/hook&loop strap

**Colors:** Black/Gold/Silver - Black/White/Silver - Mystery Ink/Core Red/Silver - Core red/Mystery Ink/Silver.

**Sizes:** S - M - L - XL.



### PRO shin-n-step - *adiGSS011M*

- PU resistant material
- Lining made of I-Comfort+ quick drying and anti-slip material
- High compression PU molded foam padding
- Homogeneous level of shock absorption
- Ergonomic shape for optimal safety & performance
- Double rigid hook & loop strap closing system for ultra-firm adjustment

**Colors:** Black/White/Silver - Core red/Mystery ink/Silver - Mystery ink/Core red/Silver - Black/Gold/Silver.

**Sizes:** XXS - XS - S - M - L - XL - XXL.







### PRO Thai gloves - adiTP300

- Genuine leather outer material
- Satin-like lining for comfort
- Strong foam construction with fully padded palm
- Rigid hook&loop strap & embossed executed artwork
- Designed for powerful impacts & experienced thai or kick boxers
- Durable construction & optimized protection

**Colors:** Black - Blue - Red.

**Sizes:** 10 - 12 - 14 - 16 oz.



### PRO Thai gloves - adiTP200

- Genuine leather outer material
- Satin-like lining for comfort
- Strong foam construction with semi-padded palm
- Rigid hook&loop strap & embossed executed artwork
- Designed for thai or kick boxers
- Durable construction & maximum protection

**Colors:** Black - Blue - Red.

**Sizes:** 10 - 12 - 14 - 16 oz.



Designed in  
**Thailand**



### Shin and step pad - adiGSS011T

- Genuine cowhide leather outer material
- High compression PU molded foam padding
- Lining made of I-Comfort+ quick drying & anti-slip material
- Neoprene gusset between shin & instep parts
- Ergonomic shape for optimal performance
- Double rigid hook&loop strap closing system for firm adjustment

**Colors:** Black.

**Sizes:** XXS - XS - S - M - L - XL - XXL.







### adiKBWKF200

- Designed for the intensive training
- Top graded buff leather quality
- Injection molded foam padding for shock absorption
- Extra foam padding located at palm for protection
- Rigid strap plus hook & loop closing system

**Colors:** Active Red/Black - Collegiate Royal/Black - Active Red/White - Collegiate Royal/White - Black/Pink - Black/Signal Green - Black/Yellow - Black/Silver Met. - Black/Gold Met.

**Sizes:** 10 - 12 - 14 - 16 oz.



### adiSBG165WK

- Designed for all levels training
- Outside material made of leather
- Injection molded foam padding for shock absorption
- Extra piece of foam padding at palm for extra-protection
- Rigid half-strap plus hook & loop closing system

**Colors:** Active Red/Black - Collegiate Royal/Black - Active Red/White - Collegiate Royal/White - Black/Pink - Black/Signal Green - Black/White - Black/Silver Met. - Black/Gold Met.

**Sizes:** 10 - 12 - 14 - 12 oz.







### adiKBPF300

- WAKO approved semi-contact pro gloves
- Outside material made of resistant PU 'carbon' fiber texture
- Injection molded foam for optimal shock absorption
- New design & ergonomic shape with padded thumb for extra protection
- Inside lining made of I-Comfort+ quick drying & anti-slip material
- Wide wrist strap for better support plus hook & loop closing system

**Colors:** Black/Gold - Blue/Silver - Red/Gold.  
**Sizes:** XXS - XS - S - M - L - XL.



### adiKBSI300

- WAKO approved pro shin & instep pad
- Outside material made of resistant PU 'carbon' fiber texture
- Injection molded foam high-density padding
- Inside lining made of I-Comfort+ quick drying & anti-slip material
- Homogeneous level of shock absorption
- Ergonomic shape for optimal performance
- Neoprene gusset between shin & instep parts
- Double rigid hook & loop strap closing system for ultra-firm adjustment

**Colors:** Black/Gold - Blue/Silver - Red/Gold.  
**Sizes:** XXS - XS - S - M - L - XL - XXL.



### adiKBB300HD

- WAKO approved pro kick-boots
- Outside material made of resistant & printed PU 'carbon' fiber texture
- Injection molded foam padding for shock absorption
- Ergonomic shape designed for the practice of kick-boxing
- Inside lining made of I-Comfort+ quick drying & anti-slip material
- Strap with non-slip silicon print & two options of strap: elastic or non-elastic

**Colors:** Black/Gold - Blue/Silver - Red/Gold.  
**Sizes:** XXS - XS - S - M - L - XL - XXL.







### adiKBPF200

- WAKO approved semi-contact gloves
- Outside material made of resistant PU dot texture
- Injection molded foam for optimal shock absorption
- Inside lining made of I-Comfort+ quick drying & anti-slip material
- Ergonomic shape with padded thumb for extra protection
- Rigid strap for support, plus hook & loop closing system

**Colors:** Black/Black - Black/White - Black/Blue - Black/Red.  
**Sizes:** XXS - XS - S - M - L - XL.



### adiKBPF100

- WAKO approved semi-contact gloves
- Outside & inside material made of resistant PU
- Injection molded foam for optimal shock absorption
- Ergonomic shape with padded thumb for extra protection
- Rigid strap for quick & firm adjustment

**Colors:** Black/White - Blue/White - Red/White.  
**Sizes:** XXS - XS - S - M - L - XL.



### adiKBSG200

- WAKO approved shinguards
- Outside material made of mat PU with metallic print
- Injection molded foam padding for shock absorption
- Inside lining made of I-Comfort+ quick drying & anti-slip material
- Ergonomic shape designed for the practice of kick-boxing
- Two rigid straps at the back for firm adjustment

**Colors:** Black/Black - Black/White - Black/Blue - Black/Red.  
**Sizes:**



### adiKBB200

- WAKO approved kick-boots
- Outside material made of PU & mat PU on heel
- Injection molded foam padding for shock absorption
- Inside lining made of I-Comfort+ quick drying & anti-slip material
- Ergonomic shape designed for the practice of kick-boxing
- Elastic strap for perfect adjustment and tightening

**Colors:** Black/Black - Black/White - Black/Blue - Black/Red.  
**Sizes:** XXS - XS - S - M - L - XL - XXL.



### adiKBB100

- WAKO approved kick-boots
- Outside & inside material made of PU
- Injection molded foam padding for shock absorption
- Ergonomic shape designed for the practice of kick-boxing
- Elastic strap for quick adjustment and tightening

**Colors:** Black/White - Blue/White - Red/White.  
**Sizes:** XXS - XS - S - M - L - XL - XXL.







### Semi contact gloves - *adiBFC01*

- Outside PU resistant material
- Injection molded foam padding for shock absorption
- Wrap around hook&loop plus rigid strap closing system for adjustment
- Ergonomic shape with opened hands for the practice of semi-contact

**Colors:** Black/White - Black/Gold - Black/Solar red - Red/White - Blue/White - White/Gold.

**Sizes:** XXS - XS - S - M - L - XL.



### Super safety boot - *adiSBP04*

- Outside PU resistant material
- Injection molded foam padding for shock absorption
- Elasticated woven strap plus hook&loop closing system
- Ergonomic shape designed for the practice of kick-boxing

**Colors:** Black/White - Black/Gold - Black/Solar red - Red/White - Blue/White - White/Gold.

**Sizes:** XXS - XS - S - M - L - XL - XXL.



### Pro men's groin guard - *adiBP11*

- Outside PU resistant material
- Thick padding made from high-density EVA foam providing optimal safety to boxer, rigid cup\* (\*cannot be removed)
- Elastic straps at the back for firm tightening

**Colors:** Black/White.

**Sizes:** XS/S - M/L - XL/XXL.



### Anatomical groin guard - *adiBP05*

- Outside PU resistant material
- Padding made from EVA foam, rigid cup\* (\*cannot be removed)
- Ergonomic shape provides an optimal protection
- Elastic straps for adjusting and tightening

**Colors:** Black - White.

**Sizes:** S - M - L - XL.



### Ankle Pad "Reversible" - *adiCHT01*

- Outside polyester slightly stretchable material
- Gives extra ankle support
- Reversible

**Colors:** Red/Blue.

**Sizes:** M - L.



### Ankle Pad - *adiCHT02*

- Outside polyester slightly stretchable material
- Gives extra ankle support

**Colors:** Black/White - Black/Solar blue - Black/Pink.

**Sizes:** XS - S - M - L - XL.



### Elbow protector - *adiEB01*

- Outside polyester slightly stretchable material
- Soft EVA foam padding for shock absorption

**Colors:** Red - Blue.

**Sizes:** S - M - L - XL.



### Men's groin guard - *adiBP06*

- Outside light, airy, cotton and synthetic materials
- Removable rigid cup permits to wash regularly the cup supporter outside fabric
- Elastic straps for adjusting and tightening

**Colors:** White.

**Sizes:** S - M - L - XL.







### Kick Boxing compétition gloves adiWAKOG1

- WAKO approved gloves
- Top graded buff leather quality
- Injection molded foam padding
- Rigidified cuff for firm tightening
- Thumb padded for extra protection
- Rigid strap plus hook&loop closing system
- Air vents for breathability

**Colors:** Red/White - Blue/White.  
**Sizes:** 10 - 12 oz.



### Kick Boxing training gloves adiWAKOG2

- WAKO approved gloves
- Outside PU resistant material
- High compression foam padding
- Rigidified cuff for firm tightening
- Thumb padded for extra protection
- Rigid strap plus hook&loop closing system
- Air vents for breathability

**Colors:** Red/White - Blue/White.  
**Sizes:** 10 - 12 - 14 - 16 oz.



### Semi contact gloves - adiWAKOG3

- WAKO approved semi contact gloves
- Outside PU resistant material
- Injection molded foam padding for shock absorption
- Ergonomic shape with opened hands for optimal performance
- Wrap around hook&loop & rigid strap closing system for firm adjustment

**Colors:** Red/White - Blue/White.  
**Sizes:** XXS - XS - S - M - L - XL.



### Super safety boot - adiWAKOB01

- WAKO approved kick-boots
- Outside PU resistant material
- Injection molded foam padding for shock absorption
- Elasticated woven strap & hook&loop closing system
- Ergonomic shape designed for the practice of kick-boxing

**Colors:** Red/White - Blue/White.  
**Sizes:** XXS - XS - S - M - L - XL - XXL.



### Shin Pad - adiWAKOSG01

- WAKO approved shin pads
- Outside PU resistant material
- EVA double layered foam padding for an optimal level of impact absorption
- Elastic strap & hook&loop closing system for firm adjustment

**Colors:** Red/White - Blue/White.  
**Sizes:** XS - S - M - L - XL.



### Elbow guard padded reversible adiWAKEB01

- WAKO approved elbow pads
- Outside polyester slightly stretchable material
- Soft EVA foam padding for shock absorption

**Colors:** Red/White - Blue/White.  
**Sizes:** S - M - L - XL.



### Shin and step pad - adiWAKOGSS11

- WAKO approved shin & instep pads
- I-Comfort+ dopling quick drying & anti-slip lining
- Injection molded foam padding
- Homogeneous level of shock absorption
- Ergonomic shape for optimal performance
- Neoprene gusset between shin & instep parts
- Double rigid hook&loop strap closing system for ultra-firm adjustment

**Colors:** Red/White - Blue/White.  
**Sizes:** XXS - XS - S - M - L - XL - XXL.



OFFICIAL SUPPLIER





### Amateur competition Gloves - AIBAG1

- AIBA approved gloves
- Top graded buff leather quality
- Polyester lining for comfort
- Injection molded foam padding
- Rigidified cuff for firm tightening
- Thumb padded for extra protection
- Rigid strap plus hook&loop closing system
- Air vents for breathability

**Colors:** Aiba red/White - Aiba blue/White.  
**Sizes:** 10 - 12 oz.



### Amateur competition headguard - AIBAH1

- AIBA approved headguard
- Top graded cowhide leather quality
- Japanese 'Amara' lining for comfort & to keep the headgear in place
- High compression foam padding providing optimized level of shock absorption
- Firm tightening system at the top of headgear
- Rigid hook&loop strap closing system at chin for firm tightening system

**Colors:** Aiba red/White - Aiba blue/White - Black/White\* (\*non AIBA approved).  
**Sizes:** S - M - L - XL.







### Boxing Kit Men - *adiBPKIT01S*

- Initiation & training black boxing gloves made of resistant PU material, molded & mixed foam, elastic hook&loop strap closing system (ref. adiSBG50)
- Stretchable black woven cotton tape with attached thumb and closing system by hook&loop strap (ref. adiBP03)
- Single transparent mouth guard, mouldable in boiled water (ref. adiBP10N)

- **Size of gloves:** 10 Oz. Model "SPEED50"
- **Width of tape:** 5 cm and length: 255 cm.



### Boxing Kit Men - *adiBPKIT01SMU*

- Initiation & training black boxing gloves made of resistant PU material, molded & mixed foam, elastic hook&loop strap closing system (ref. adiSBG50)
- Training jump rope made of nylon cord and strong plastic handles (ref. adiJRW05)
- Inner gloves made of polyester material, with thumb hole & stitching between fingers (ref. adiBP022)

- **Size of gloves:** 10 Oz. Model "SPEED50"
- **Width of tape:** 5 cm and length: 255 cm.



### Adults Boxing kit - *adiBTKA02*

- Initiation & training black boxing gloves made of resistant PU material, molded & mixed foam, rigid strap plus hook&loop closing system
- Focus mitt, with large grip ball located at palm, made of mixed foam padding providing optimal impact absorption for coach
- Moisture wicking breathable fabric enables an optimized ventilation thanks to Aeroready technology, at the palm of glove & at back side of mitt

**Colors:** Black/White.

**Sizes:** S (10 oz) - M (12 oz) - L (14 oz).

**AEROREADY**



### Kids Boxing kit - *adiBTKK02*

- Initiation & training black boxing gloves made of resistant PU material, molded & mixed foam, inside lining, rigid strap plus hook&loop closing system
- Focus mitt, with large grip ball located at palm, made of mixed foam padding providing optimal impact absorption for coach
- Moisture wicking breathable fabric enables an optimized ventilation thanks to Aeroready technology, at the palm of glove & at back side of mitt

**Colors:** Blue/Red.

**Sizes:** XXS (6 oz) - XS (8 oz).

**AEROREADY**





### Boxing bag set - *adiBPKIT03*

- Initiation & training black boxing gloves made of resistant PU material, mixed foam, elastic hook&loop strap closing system (ref. adiSBG50)
- Stretchable black woven cotton tape with attached thumb & closing system by hook&loop strap (ref. adiBP03)
- Leisure punching bag made of parachute-like polyester fabric (adiBAC11)

**Colors:** Black/White.

**Sizes:** Gloves 12 oz - Punching bag 90 x 30 cm  
Bandage 5 x 255 cm.



### Junior boxing kit set - *adiBACJR II*

- Initiation & training black boxing gloves made of resistant PU material, mixed foam, elastic hook&loop strap closing system (ref. adiSBG50)
- Leisure punching bag made of parachute-like polyester fabric (adiBAC11)

**Colors:** Black/White.

**Sizes:** Gloves 6 oz - Punching bag: 75 x 30 cm.



### Boxing kit set - *adiBPKIT04*

- Initiation & training black boxing gloves made of resistant PU material, molded & mixed foam, elastic hook&loop strap closing system (ref. adiSBG50)
- Training jump rope made of nylon cord & strong plastic handles (ref. adiJRW05)
- Stretchable black woven cotton tape with attached thumb & closing system by hook&loop strap (ref. adiBP03)

**Colors:** Black/White.

**Sizes:** Gloves 10 or 12 oz - Jump rope 275 cm (9ft) - Tape 5 x 255 cm.



ALYCIA BAUMGARDNER  
WBC WORLD CHAMPION





# PROTECTORS





### Super pro headguard with chin protection - *adiSBHG041*

- Genuine leather outer material
- Thick EVA foam plus extra foam & wool padding for the resistance to impact
- Lining helping to keep the protector in place
- Optimized level of shock absorption throughout the headgear
- Wide rigid hook&loop strap closing system at the back of head
- Firm tightening system and easy adjustment

**Colors:** Black/Yellow - Black/Gold - Black/Solar red - Black/Shock pink - Solar red/Silver - White/Gold.  
**Sizes:** S - M - L - XL.



### Super pro headguard - *adiSBHG042*

- Top resistant PU fabric
- EVA foam padding with strong resistance to impact
- 'Amara' PU lining to keep protector in place
- Optimized level of shock absorption throughout the headgear
- Wide rigid hook&loop strap closing system at the back of head
- Easily adjustable secure fastening system

**Colors:** Black/Yellow - Black/Gold - Black/Solar red - Black/Shock pink - Solar red/Silver - White/Gold.  
**Sizes:** S - M - L - XL.







AARON MCKENNA  
ADIDAS TEAM



### Semi-Open headguard - *adiBHG023*

- Outside resistant PU & PU 'Maya' materials
- Lining made of quick drying & anti-slip I-Comfort+ material
- Thick EVA light-weight and strongly resistant foam
- Additional foam padding at the back of head
- Optimized level of shock absorption throughout the headgear
- Large hook&loop strap at the back of the head for precise adjustment

**Colors:** Black/White - Black/Red.

**Sizes:** XS - S - M - L - XL.



### Open headguard - *adiBH01*

- Outside PU resistant material
- Injected EVA foam material for shock absorption
- Padded area on top of the head for optimal protection
- Large hook&loop at the back, elastic jaw strap for quick adjustment

**Colors:** Red - Blue - Black.

**Sizes:** XXS - XS - S - M - L - XL.



### PRO Full protection boxing headgear - *adiBHGF01*

- Top graded leather quality
- Thick EVA multi-layers foam padding with strong resistance to impact
- Optimized level of shock absorption throughout the headgear
- Rigid bar on the front of headgear for maximum protection
- Wide rigid hook&loop strap closing system at the back & at chin
- Firm tightening system and easy adjustment

**Colors:** Black/White.

**Sizes:** S/M - L/XL.







## AEROREADY

### Gel under mitts

adiBP012/adiBP013 (Women model)

- Outside neoprene & polyester materials
- Inner layer of gel protects the metacarpals
- Moisture wicking breathable fabric enables an optimized ventilation thanks to aeroready technology
- Stitching between fingers, thumb hole & loop to pull protector out
- Wrap around hook&loop bandage for optimal adjustment (2 meters)

**Colors:** Black/White - Black/Shock pink - Black/Shock red - Black/Gold.  
**Sizes:** S/M - L/XL.



## AEROREADY

### Gel under mitts - adiBP014

- Outside neoprene & polyester materials
- Inner layer of gel protects the metacarpals
- Moisture wicking breathable fabric enables an optimized ventilation thanks to aeroready technology
- Stitching between fingers, thumb hole & loop to pull protector out
- Wrap around hook&loop bandage for optimal adjustment

**Colors:** Black/White - Black/Shock pink - Black/Shock red - Black/Gold.  
**Sizes:** S/M - L/XL.



### Knuckle Sleeve - adiSKS01

- Outside neoprene & polyester materials
- Inner layer of gel protects the metacarpals
- Stitching between fingers

**Colors:** Black/White - Black/Shock Red - Black/Shock Pink - Black/Gold.  
**Sizes:** Unique size.



### Padded inner mitts - adiBP02

- Outside polyester material
- Inner layer of gel protects the metacarpals
- Reinforced stitching between fingers, thumb hole
- Wrap around hook&loop bandage for optimal adjustment

**Colors:** Black/White - Black/Shock pink - Black/Shock red - Black/Gold

**Sizes:** XS - S - M - L - XL.



### Inner mitts - adiSBP022

- Outside polyester material
- Thumb hole, stitching between fingers

**Colors:** Black/White - Black/Shock pink - Black/Shock red - Black/Gold

**Sizes:** XS - S - M - L - XL.



### Hand wrap - adiBP03/adiBP031

- Outside mixed cotton:nylon (60:40) stretchable tape
- Hook&loop strap closing system at the end of wrap

**Colors:** Black - Yellow - Red - Blue - White - Pink.

**Length:** 255 cm - 350 cm - 450 cm.

**Width:** 5cm (adiBP03) - 5,7cm (adiBP031 / AIBA rules).



### Hand wrap - adiBP032

- Outside mixed cotton:lycra (90:10) stretchable tape
- Hook&loop strap closing system at the end of wrap

**Colors:** Black - Yellow - Red - Blue - White - Pink.

**Length:** 255 cm - 350 cm - 450 cm.

**Width:** 5cm.







### Shin pad - *adiBP07*

- Outside mixed cotton & polyester comfortable materials
- Inside padded with EVA absorbing single layer foam
- Easy slip-in & washable protector

**Colors:** Red - White - Blue - Black.  
**Sizes:** XXS - XS - S - M - L - XL - XXL.



### Shin instep pad - *adiBP08*

- Outside mixed cotton & polyester comfortable materials
- Inside padded with EVA absorbing single layer foam
- Easy slip-in & washable protector

**Colors:** Red - White - Blue - Black.  
**Sizes:** XXS - XS - S - M - L - XL - XXL.



### Shin and step pad - *adiGSS013*

- Outside mixed cotton & polyester comfortable materials
- Made of highly resistant EVA foam for shock absorption
- Triple hook&loop plus elastic strap closing system for firm adjustment
  - Ergonomic shape for optimal performance

**Colors:** Black/White - Black/Solar blue - Black/Pink.  
**Sizes:** XXS - XS - S - M - L - XL - XXL.



### Shin instep pad - *adiGSS012*

- Outside resistant PU material
- Made of highly resistant EVA foam for shock absorption
- Inside lining made of neoprene material
- Straps with hook&loop rear closing at calf for ultra-firm adjustment
- Ergonomic shape for optimal performance

**Colors:** Black/White - Black/Solar Blue.  
**Sizes:** S - M - L - XL - 2XL.



### Kick-boxing shin pad - *661.25*

- Outside PU resistant material
- EVA double layered foam padding for an optimal level of impact absorption
- Hook&loop and elastic strap closing system for quick & firm adjustment

**Colors:** Black/White - Black/Gold - Black/Solar red - Red/White - Blue/White - White/Gold - White/Black.  
**Sizes:** XS - S - M - L - XL.



### Shin and step pad - *adiGSS011 2.0*

- Homogeneous level of shock absorption
- Ergonomic shape for optimal performance
- Neoprene gusset between shin & instep parts
- Double rigid hook&loop strap closing system for ultra-firm adjustment

**Colors:** Black/White - Black/Gold - Black/Solar red - Red/White - Blue/White - White/Gold.  
**Sizes:** XXS - XS - S - M - L - XL - XXL.







### Elbow guard - *adiEG01*

- Outside resistant neoprene material
- EVA foam padding for shock absorption
- Flatlock stitching provides comfort
- Ergonomic shape for optimal performance

**Colors:** Black/White

**Sizes:** S/M - L/XL



### Knee guard - *adiKG01*

- Outside resistant neoprene material
- EVA foam padding for shock absorption
- Flatlock stitching provides comfort
- Ergonomic shape for optimal performance

**Colors:** Black/White

**Sizes:** S/M - L/XL



### Ankle support - *adiAS01*

- Outside resistant neoprene material
- Foot grip print located at outer sole
- Flatlock stitching provides comfort
- Ergonomic shape for optimal performance

**Colors:** Black/White

**Sizes:** S - M - L - XL



### Super body protector - *adiSBP01*

- Exterior made of highly resistant PU & Flex PU materials
- Multi layered EVA & memory foam padding to ensure a good level of shock absorption
- Additional embossed foam areas on the front and the two sides of the body protector
- Easy tight buckle & nylon straps for easy adjustment

**Colors:** Black/White - Black/Gold - Black/Core red - Black/Mystery ink.

**Sizes:** STD.



### Reversible body protection - *adiIP01*

- Outside resistant PU3G material
- High-density EVA foam padding for optimal shock absorption
- Elastic straps and double hook&loop closing at the back for perfect adjustment and tightening

**Colors:** Blue/Red (reversible).

**Sizes:** S - M - L - XL.







### Mouthguard PLATINIUM - adiBP36

- Anatomically positioned during moulding, to grip teeth in all the right places. Specially shaped for clear breathing & talking
- Ultra-flow gel inner channel for cushioning & comfort
- Two protective layers for high impact resistance
- Easy to fit system allows a smooth moulding process
- Silver ion technology added to case and mouthguard to inhibit the growth of bacteria by 99.9%

**Colors:** Red/Black/White.

**Sizes:** Senior.



### Mouthguard GOLD - adiBP34/35

- Anatomically positioned fins soften during moulding to grip teeth in all the right places. Specially shaped for clear breathing & talking
- Ultra impact resistant outer layer to absorb blows
- Enhanced flow gel flexible inner channel for cushioning
- Easy to fit system allows a smooth moulding process
- Silver ion technology added to case and mouthguard to inhibit the growth of bacteria by 99.9%

**Colors:** Black/Gold - Blue/Pearl.

**Sizes:** Junior (adiBP34) - Senior (adiBP35).



### Mouthguard PLATINIUM - adiBP32/33

- Patented fins breakdown during moulding to grip teeth
- Specially shaped palate for clear breathing & talking
- High-flow gel flexible inner channel for cushioning
- Hi-impact resistant outer layer to absorb blows
- Fitting handle helps positioning during moulding
- Silver ion technology added to the mouthguard to inhibit the growth of bacteria by 99.9%

**Colors:** Black/Red - Blue/Light blue - White/Black.

**Sizes:** Junior (adiBP32) - Senior (adiBP33).



### Mouthguard GOLD - adiBP31/31J

- Patented fins soften during moulding to grip teeth
- Specially shaped palate for clear breathing & talking
- Supreme comfort : single impact resistant outer layer
- Improved protection : gel inner channel for cushioning

**Colors:** Black - Blue - White.

**Sizes:** Junior (adiBP31) - Senior (adiBP31J).



### Mouthguard Snapfit JUNIOR - adiBP30/30J

- Soft protective material
- Maximum retention : no need to boil and bite
- Specially shaped palate for clear breathing & talking

**Colors:** Black - Blue - White.

**Sizes:** Junior (adiBP30) - Senior (adiBP30J).



**opro**  
mouthguards



**Inhibit the growth of bacteria  
by up to 99.99%**

**The adidas brand proudly collaborates with OPRO as the world's most technically advanced mouthguard company and a leading pioneer in oral protection. It allows bringing cutting-edge technology, innovation, and safety to all combat sports players with premium-level mouth protection.**



### Double mouthguard - adiBP10N

- Thermoformable material

**Colors:** Transparent.

**Sizes:** Senior.



### Single mouthguard - adiBP09

- Thermoformable material

**Colors:** Transparent.

**Sizes:** Junior - Senior.







### Wooden skipping rope - *adiJRW01*

- Wooden handled weighted skipping rope
- Reinforced wood and leather cord, Japanese ball bearing
- Adjustment by opening the bottom of the handle
- Strong durability

**Colors:** Wood.

**Sizes:** 275 cm (9FT).



### Training jump rope - *adi1108*

- Polypropylene handle & PE and nylon-made cord
- Ball bearing system
- Strong durability
- One color identifies the size

**Colors/Sizes:** Black (180cm / L) - Red (140 cm / S)- Blue (165 cm).



### Nylon jump rope - *adiJRW05*

- Nylon made jump rope
- Strong durability

**Colors:** Black.

**Sizes:** 275 cm (9FT).



### Nylon skipping rope - *adiJRW03*

- Plastic and nylon-made cord
- Ball bearing system
- Strong durability

**Colors:** Black.

**Sizes:** 275 cm (9FT).



FRANCISCO **OCHOA**  
ADIDAS TEAM





### PRO Focus mitts - *adiPFP01*

- Curved focus mitt made of leather
- Perforated leather at back for air ventilation
- Layered construction foam for absorption of impacts
- Grip ball at palm for ergonomic grip to avoid slip effect
- Ventilation for comfort feel dry

**Colors:** Black/White - Black/Gold.

**Sizes:** 16 x 20,5 x 5 cm.



### PRO Disk punch mitts - *adiSDP01*

- Curved short focus mitt made of buff leather
- Perforated leather at back for air ventilation
- Layered construction foam for absorption of impacts
- Grip ball at palm for ergonomic grip to avoid slip effect
- Ventilation for comfort feel dry
- Designed for training use and precision work

**Colors:** Black/White - Black/Gold.

**Sizes:** 18 x 18 x 2 cm.



### AEROREADY

#### Training curved focus mitts - *adiSBAC01*

- Curved focus mitt short made of resistant PU material
- Inside made of mixed EVA & 'polymax' foams padding providing optimal impact absorption for coach
- Moisture wicking breathable fabric enables an optimized ventilation thanks to Aeroready technology
- Large grip ball located at palm
- Adjustable wrist hook&loop strap at the back for a better tightening

**Colors:** Black/Solar red - Black/Gold - Shock pink/White/Silver - White/Gold - Solar red/Black/Silver - Solar yellow/Dark blue.

**Sizes:** 18 x 24 x 4 cm.



### AEROREADY

#### Coach mitts - *adiSBAC014*

- Curved focus mitt short made of resistant PU material
- Inside made of mixed EVA & 'polymax' foams padding providing optimal impact absorption for coach
- Moisture wicking breathable fabric enables an optimized ventilation thanks to Aeroready technology
- Large grip ball located at palm & easy slip-in at the back

**Colors:** Black/White - Black/Solar red - Black/Gold - Shock pink/White/Silver - White/Gold - Solar red/Black/Silver - Solar yellow/Dark blue.

**Sizes:** 19 x 26 x 4 cm.



ALYCIA BAUMGARDNER  
WBC WORLD CHAMPION





## AEROREADY

### Elite mini mitts Square - *adiEMP01*

- Slightly curved short focus mitt made of buff leather
- Padding made of EVA 'sandwich foam' for optimal durability and strong shock absorption capacity
- Moisture wicking breathable fabric enables an optimized ventilation thanks to aeroready technology
- Dedicated to pros and precision work

**Colors:** Black/White - Black/Gold.

**Sizes:** 16 x 20,5 x 5 cm.



## Short focus mitts - *adiMP02*

- Slightly curved short focus mitt made of resistant PU material
- Padding made of EVA 'sandwich foam' for optimal durability and strong shock absorption capacity
- Dedicated to pros and precision work

**Colors:** Black/White - Black/Gold.

**Sizes:** 18 x 18 x 2 cm.



## Ultimate classic air mitts

### "Vaccum Pad" - *adiBAC0112*

- Hand and shield exterior sides made of high quality leather
- Grip ball located at palm ensures a good grip
- Leather wrist hook and pull strap with hook&loop allows a strong and firm tightening to the instructor
- Padded with soft vacuum foam construction for bettershock absorbtion, as per «American» style vaccum pads

**Colors:** Black/White - Black/White/Gold.

**Sizes:** 28 x 26 x 12 cm.



## AEROREADY

### Curved punch mitts - *adiBAC015*

- Genuine leather outer material
- Grip ball located at palm ensures a good grip
- Thick foam padding, providing optimal impact absorption for coach
- Moisture wicking breathable fabric enables an optimized ventilation thanks to aeroready technology
- Wrist hook & pull strap allows a strong tightening to the instructor

**Colors:** Black/White/Black/Silver - Core red/Mystery ink/Black/Silver - Mystery ink/Core red/Black/Silver - Black/Gold/Silver.

**Sizes:** 19 x 24 x 6 cm.



ROBERT GARCIA  
IBF WORLD CHAMPION





### Square shield - *adiBAC031*

- Exterior made of 'Maya' PU & PU mixed materials
- Interior filled with 'aero' foam padding, to provide absorption effect
- One nylon/plastic bar and one nylon rigid strap enable a quick use
- Accessory dedicated to precision work

**Colors:** Black/White.

**Dimensions:** 30 x 23 x 8 cm.

PUG



### Boxing paddle target - *adiPT01*

- Outside resistant PU & PU 'Maya' materials
- Thick EVA foam for optimal shock absorption
- Firm and reinforced handle for a firm tightening
- Elasticated strap at the end of target, to link the accessory to wrist
- Light weight accessory fully shaped to the coach hand

**Colors:** Black.

**Sizes:** STD.

PUG



JAMEL HERRING  
WBO WORLD CHAMPION





### Thai shield - *adiBAC041*

- Thai style shield extra thick designed made of resistant PU outside material with woven backing for durability
- Inside made of superior padding dedicated to heavy duty
- Reinforced handle with double hook&loop rigid wrist and forearm straps for perfect adjustment

**Colors:** Black/White.

**Dimensions:** 41 x 20 x 12 cm.



### Shield - *adiBAC31*

- Exterior made of PU material
- One nylon bar and two nylon rigid straps with velcro enable a quick use of the accessory
- Interior filled with 'aero' foam padding, to provide absorption effect at training

**Colors:** Black/White.

**Dimensions:** 42 x 21 x 10 cm.



### "Iranian Style" curved shield - *adiTHK01*

- Iranian style shield made of resistant PU outside material and filled with resistant 'Polymax' foam padding
- Optimal durability and shock absorption at training
- Three reinforced handles enable a good grip
- Designed for sparring and training kick techniques

**Colors:** Black/White.

**Size:** 42 x 24 x 10 cm.



### Medium shield - *adiBAC05*

- Exterior made of 'Maya' PU resistant material, for durability
- Handle bar made of strong nylon with two hook&loop arm straps enable a good closing and tightening of the accessory at training
- Interior is filled with thick 'aero foam' padding for impact absorption
- Accessory designed for intensive use

**Colors:** Black/White.

**Dimensions:** 50 x 30 x 12 cm.



### Large curved shield - *adiBAC06*

- Outside made of 'Maya' PU & PU mixed materials, with special backing for durability of accessory
- Interior filled with 'aero foam' padding plus side vents to provide vacuum effect for a good impact absorption
- Curved shape, three handle bars and strong nylon straps enable a good handling

**Colors:** Black/White.

**Dimensions:** 65 x 45 x 14 cm.







### Large & long extra curved shield - *adiBAC051*

- Exterior made of 'Maya' PU & PU mixed materials, with special backing to ensure the durability
- Interior filled with 'aero foam' padding plus side vents, to provide vacuum effect and to ensure a good impact absorption
- Extra curved and slim shape, three straps made of resistant nylon enable a good handling of the accessory

**Colors:** Black/White.

**Dimensions:** 80 x 35 x 15 cm.

**PU3G**  
**CE**



### Round kick pad - *adiRHP01*

- Exterior made of PU material
- One nylon bar & two nylon rigid straps with hook&loop enable a quick use
- Interior is filled with 'aero' foam padding to provide absorption effect
- Clean adidas logo and stripes printed

**Colors:** Black/White.

**Dimensions:** 40 x 40 x 16 cm.

**PU3G**  
**CE**



### "Focus" Thai pad - *adiFTP01*

- Outside PU & PU3G resistant materials
- Mixed IMF, EVA & EVA recycled foams for a good shock absorption
- Padded areas made of Hydro Fil mesh & memory foam located at the back of the pad ensuring an optimal shock protection
- Large handle, two adjustable hook & loop straps for firm tightening

**Colors:** Black/White.

**Sizes:** STD.

**PU3G**  
**CE**





### Water Bottle - *adiBWB01*

- Made of lightweight and durable material
- Top seals tightly and cover on straw to prevent leaks
- Straw allows drinking at training even with headgear on

**Color:** Black.

**Capacity :** 1 liter.



### Mini gloves - *adiBPC02*

Pair of mini boxing gloves. Made of PU outside and wool padding inside, suspended by string.

**Colors:** Red - Black.

**Sizes :** 9 cm.



### Reflex Ball Kit - *adiBAC40*

- Adjustable Baseball Cap with loop connection
- 3 foam reflex balls with elastics and metal hooks
- Packed in mesh bag

**Colors:** Black cap with Red reflex balls.

**Sizes :** Unique size.



### Key-chain gloves - *adiMG01*

Mini boxing gloves keychain. Made of PU outside and mixed foam padding inside, attached to chrome plated key-chain.

**Colors:** Blue - Red - Black.

**Sizes :** 6 cm.





adidas

# PUNCHING BAGS





### Speed punching bags - adiBAC18

- Made of re-enforced Vinyl outer fabric
- Reinforced stitchings
- Suspended by metal chains or nylon straps (at choice) and 'D' metal ring for hanging the bag on ceiling. Auto-locking slider zipper.
- This punch bag has been filled with textile cuttings only and electronically scanned for your protection

**Colors:** Black/White - Black/Gold - Black/Silver - Black/Solar red - Black/Shock pink.

**Sizes:** 120 x 33 cm - 30 kg +/- 3 kg.  
150 x 33 cm - 33 kg +/- 3 kg.  
180 x 30 cm - 40 kg +/- 3 kg.



### Maya training bags - adiBAC21

- Made of resistant 'Maya' PU outer fabric
- Suspended by metal chains or nylon straps (at choice) and 'D' metal ring for hanging the bag on ceiling. Auto-locking slider zipper.
- This punch bag has been filled with textile cuttings only and electronically scanned for your protection

**Colors:** Black/White.

**Sizes:** 90 x 30 cm - 19 kg +/- 3 kg.  
120 x 33 cm - 30 kg +/- 3 kg.  
150 x 33 cm - 33 kg +/- 3 kg.  
180 x 30 cm - 40 kg +/- 3 kg.



AARON MCKENNA  
ADIDAS TEAM





JAMEL HERRING  
WBO WORLD CHAMPION



### Punching bags "CADURA" - *adiBAC11*

- Made of light weight training punching bag made of "parachute" like "Cadura" 600 denier polyester mat fabric with PU backing
- Suspended by chains or nylon straps (at choice) and 'D' metal ring for hanging the bag on ceiling. Auto-locking slider zipper
- This accessory has been designed for initiation to boxing and for use at home, and not to be used for regular or intensive practice of boxing

**Colors:** Black/White.

**Sizes:** 90 x 30 cm - 19 kg +/- 3 kg.  
120 x 30 cm - 28 kg +/- 3 kg.

### Punching bags "DIMEX" - *adiBAC12*

- Made of light weight training punching bag made of "parachute" like "Dymex" polyester mat 1680 denier fabric with PU backing
- Suspended by chains or nylon straps (at choice) and 'D' metal ring for hanging the bag on ceiling. Auto-locking slider zipper
- This accessory has been designed for initiation to boxing and for use at home, and not to be used for regular or intensive practice of boxing

**Colors:** Black/White.

**Sizes:** 90 x 30 cm - 19 kg +/- 3 kg.  
120 x 33 cm - 30 kg +/- 3 kg.  
150 x 33 cm - 33 kg +/- 3 kg.





## Heavy leather punching bags - *adiBAC16*

- Made of buff calf leather
- Designed in a fatter 'US' style with a large diameter, to enable heavy duty use
- Suspended by metal chains and 'D' metal ring for hanging the bag on ceiling. Auto-locking slider zipper.
- This punch bag has been filled with textile cuttings only and electronically scanned for your protection

**Colors:** Black/Red.

**Sizes:** 90 x 40 cm - 21 kg +/- 3 kg.  
120 x 40 cm - 47 kg +/- 3 kg.  
150 x 40 cm - 53 kg +/- 3 kg.



## POWER Punching bags - *adiBAC161*

- Made of resistant split leather
- Suspended by metal chains and 'D' metal ring & swivel for hanging the bag on ceiling. Auto-locking slider zipper.
- This punch bag has been filled with textile cuttings only and electronically scanned for your protection

**Colors:** Black/White.

**Sizes:** 90 x 35 cm - 25 kg +/- 3 kg.  
120 x 35 cm - 36 kg +/- 3 kg.



ALYCIA BAUMGARDNER  
WBC WORLD CHAMPION





### Fat punching bag pro - *adiBAC25*

- Made of PU outer resistant fabric
- Designed in a fatter 'US' style with a large diameter, to enable heavy duty use
- Suspended by metal chains and 'D' metal ring for hanging the bag on ceiling. Auto-locking slider zipper
- This punch bag has been filled with textile cuttings only and electronically scanned for your protection

**Colors:** Black/White.

**Sizes:** 120 x 40 cm - 31 kg +/- 3 kg.  
150 x 40 cm - 37 kg +/- 3 kg.  
180 x 40 cm - 61 kg +/- 3 kg.



### Sharp shooter bag - *adiBAC29*

- Made of PU outer resistant fabric
- Suspended by metal chains and 'D' metal ring for hanging the bag on ceiling. Auto-locking slider zipper
- This punch bag has been filled with textile cuttings only and electronically scanned for your protection

**Colors:** Black/White.

**Sizes:** 120 x 23 cm - 18 kg +/- 2 kg.



### Training Bag with "6 Targets" - *adiBAC30*

- Made of PU outer resistant fabric
- Six printed targets enable Kick or Thai boxers to practice with different levels of punches & kicks
- Suspended by metal chains and 'D' metal ring for hanging the bag on ceiling. Auto-locking slider zipper
- This punch bag has been filled with textile cuttings only and electronically scanned for your protection

**Colors:** Black/White.

**Sizes:** 150 x 33 cm - 33 kg +/- 3 kg.  
180 x 40 cm - 40 kg +/- 3 kg.



### Heavy boxing trainer - *adiBAC43*

- Resistant PU & high density foam
- Base tank with water is about 105 kgs
- Freestanding bag of dim. (diameter) 38 cm x (height) 115 cm
- Allows speed, punch and precision work

**Colors:** Black/White.

**Sizes:** Total Product Height: 177 cm  
Punching Bag: 43 x 140 cm  
Base: 69 x 37 cm (about 7 kgs unfilled)





### Heavy boxing trainer - *adiBAC42*

- Resistant PU & high density foam
- Base tank with water is about 140 kgs
- Freestanding bag of dim. (diameter) 42 cm x (height) 132 cm
- Allows speed, punch and precision work

**Colors:** Black/White.

**Sizes:** Total Product Height: 195 cm  
Punching Bag: 42 x 132 cm  
Base: 81 x 35,5 cm (about 10 kgs unfilled)



### Power Tilt Freestanding Punchbag - *adiBAC38/37*

- Resistant PU & high density foam
- Base tank with water is about 38kgs
- 'Culbuto' rocking system
- Allows speed, punch and precision work

**Colors:** Black/White.

**Sizes:** Total Product Height: 162 cm (adiBAC37: 163 cm)  
Punching Bag: 34.5 x 117 cm (adiBAC37: 28 x 123 cm)  
Punching Material: PU foam  
Base: 54,5 x 45 cm x 44 cm - about 38kgs  
(adiBAC37: 43 x 43 cm - about 34kgs)



### PU Cobra Bag Punching Ball - *adiBAC36*

- Hitting area made of resistant PU material
- Base tank with water is about 88kgs
- Adjustable height to 183cm
- Allows speed and precision work

**Colors:** Black/White.

**Sizes:** Adjustable Height to: 183 cm  
Punching Ball: 21 x 28 cm  
Base Dia: 62 x H 28 cm



### Heavy Boxing Trainer - *adiBAC35*

- Hitting area made of resistant PU material
- Base tank with water is about 60kgs
- Adjustable height: 151cm - 171.5cm
- Allows speed and precision work

**Colors:** Black/White.

**Sizes:** Adjustable Height: 151 cm - 171.5 cm  
Punching Bag: 32 x 62.5cm  
Base: 62 x 28cm - about 3.6 kgs





### Uppercut horizontal bag - *adiBAC24*

- Made of PU outer resistant fabric with a woven backing
- Suspended by two strong nylon straps and 'D' metal ring for hanging the bag on ceiling
- This punch bag has been filled with textile cuttings only and electronically scanned for your protection

**Colors:** Black/White.

**Dimensions:** 81 x 42 cm.



### Body snatcher bag - *adiBAC27*

- Made of PU outer resistant fabric with a woven backing & lace closing on top side
- Suspended by metal chains and 'D' metal ring for hanging the bag on ceiling
- This punch bag has been filled with textile cuttings only and electronically scanned for your protection

**Colors:** Black/White.

**Dimensions:** 61 x 56 cm.



### Maize punching bag - *adiBAC23*

- Made of shiny 'Maya' PU outer resistant fabric with a woven backing & auto-lock slider zipper
- Suspended by metal chains and 'D' metal ring for hanging the bag on ceiling
- This punch bag has been filled with textile cuttings only and electronically scanned for your protection

**Colors:** Black/White.

**Dimensions:** 48 x 60 cm - 30 kg +/-5%.



### Uppercut bag - *adiBAC22 / 22L*

- Made of shiny 'Maya' PU outer resistant fabric with a woven backing & auto-locking slider zipper
- Suspended by metal chains and 'D' metal ring for hanging the bag on ceiling
- This punch bag has been filled with textile cuttings only and electronically scanned for your protection

*Exist in leather under the reference adiBAC22L*

**Colors:** Black/White.

**Sizes:** 92 x 46 cm - 28 kg +/-5%.



### Tear drop maze bag - *adiBAC19*

- Made of shiny 'Maya' PU outer resistant fabric with a woven backing & auto-locking slider zipper
- Suspended by metal chains and 'D' metal ring for hanging the bag on ceiling
- This punch bag has been filled with textile cuttings only and electronically scanned for your protection

**Colors:** Black/White.

**Sizes:** 90 x 30 cm - 25 kg +/-5%.





MERCITO GESTA  
WBO NABO YOUTH TITLE



### Speed Double end ball - *adiSP300DE*

- Speed striking ball made of resistant leather
- Supplied with rubber cord & metal latch
- Lace up closing with changeable valve bladder
- The inside latex bladder accepts a deflation of +/- 20% over a period of 72 hours, as latex is a natural element; our recommendation is to add air on a regular basis

**Colors:** Black/White - Blue/White - Red/White.  
**Dimensions:** Ø 24 cm.



### Speed ball pro - *adiBAC091*

- Speed striking ball «American style» made of leather
- Lace up closing with changeable valve bladder
- The inside latex bladder accepts a deflation of +/- 20% over a period of 72 hours, as latex is a natural element; our recommendation is to add air on a regular basis

**Color:** Black.  
**Sizes:** 13 x 20 cm - 15 x 23 cm - 18 x 25cm.



### Double end ball - *adiBAC121*

- Outside material made of leather
- Heavy duty rubber cord with metal 'easy latch'
- Lace up closing with changeable valve bladder
- The inside latex bladder accepts a deflation of +/- 20% over a period of 72 hours, as latex is a natural element; our recommendation is to add air on a regular basis

**Color:** Black.  
**Dimensions:** Ø 25 cm.







# APPARELS





ALYCIA BAUMGARDNER  
WBC WORLD CHAMPION



### Training Sleeveless t-shirt - *adiSWSST02*

- Premium sleeveless training T-shirt designed for women
- CVC jersey material of weight +/- 130 grs/sqm- 4,5 oz
- Quick drying AEROREADY fabrics providing ventilation and temperature regulation
- Direct heat transfer logo at front

**Colors:** Grey/Black - Black/Grey - Khaki/Gold.

**Sizes:** XXS - XS - S - M - L - XL

### Start Track Jacket - *adiSWSTJ01*

- Premium training hoody designed for women
- CVC French terry fabric of weight +/- 220 grs/sqm- 7,7 oz
- Elasticated waist, adjustable hood with flat draw cord
- Side pockets, full length zipper on front
- Direct heat transfer logo on sleeve

**Colors:** Grey/Black - Black/Grey - Khaki/Gold.

**Sizes:** XS - S - M - L - XL - 2XL - 3XL - 4XL



### Training Skort - *adiSWSK02*

- Premium training skort designed for women
- Mixed 95:5 cotton: elastane jersey fabric of weight +/- 180 grs/sqm- 6 oz
- Elasticated belt, inner short made of stretchable lycra fabric
- Direct heat transfer logo at front

**Colors:** Grey/Black - Black/Grey - Khaki/Gold.

**Sizes:** XXS - XS - S - M - L - XL





### Training Tank - *adiSGTM01*

- Premium sleeveless training T-shirt designed for men
- CVC jersey material of weight +/- 130 grs/sqm- 4,5 oz
- Quick drying AEROREADY fabrics providing ventilation and temperature regulation
- Direct heat transfer logo at front

**Colors:** Grey/Black - Black/Grey - Khaki/Gold.

**Sizes:** XS - S - M - L - XL - 2XL - 3XL - 4XL.



### Training Short - *adiSBS01 B*

- Premium training skort designed for men
- Jersey fabric of weight +/- 200grs/sqm- 7 oz
- Comfortable cut, elasticated belt & side opened pockets
- Direct heat transfer logo at front

**Colors:** Grey/Black - Black/Grey - Khaki/Gold.

**Sizes:** XS - S - M - L - XL - 2XL - 3XL - 4XL.



### Training Sleeveless hoody - *adiCHBSS01*

- Premium sleeveless training hoody designed for men
- CVC French terry fabric of weight +/- 220 grs/sqm- 7,7 oz
- Elasticated waist, adjustable hood with flat draw cord
- Side opened pockets, full length zipper on front
- Direct heat transfer logo on sleeve

**Colors:** Grey/Black - Black/Grey - Khaki/Gold.

**Sizes:** XS - S - M - L - XL - 2XL - 3XL - 4XL.



### Training Hoody - *adiCHBS01*

- Premium training hoody designed for men
- CVC French terry fabric of weight +/- 220 grs/sqm- 7,7 oz
- Elasticated waist, adjustable hood with flat draw cord
- Side opened pockets, full length zipper on front
- Direct heat transfer logo on sleeve

**Colors:** Grey/Black - Black/Grey - Khaki/Gold.

**Sizes:** XS - S - M - L - XL - 2XL - 3XL - 4XL.





### “Kick Light” Sleeveless Kick-boxing T-shirt - *adiWAKOST1*

- Kick Light tank top made from light micro-polyester +/- 130 grs/m<sup>2</sup>
- Comfortable, 100% polyester 'PunchLine' fabric
- Sleeveless, Regular-fit cut, round neck provide kick boxers with total freedom of movement

**Colors:** Red - blue.

**Sizes:** 2XS - XS - S - M - L - XL - 2XL - 3XL - 4XL.



### “Low Kick or K1 Style” Kick-boxing Short *adiLKS1-WAKO*

- Kick Light short made from light-weight 100% microfiber-polydiamond polyester with 4% spandex +/- 110 grs/m<sup>2</sup>
- Contrasting large elastic waist-band plus tightening cord, for optimal comfort

**Colors:** Red - Blue.

**Sizes:** 2XS - XS - S - M - L - XL - 2XL.

### “Kick Light” Kick-boxing Short *adiWAKOS01*

- 'Kick Light' short made from light-weight 100% polyester fluid fabric +/- 130 g/m<sup>2</sup>
- Large elastic waist-band plus tightening cord, for optimal comfort

**Colors:** Red - Blue.

**Sizes:** 2XS - XS - S - M - L - XL - 2XL - 3XL - 4XL.



### “Point fighting” T-shirt - *adiPFT1/adiPFT1-PU*

- Available in two comfortable fabrics:
  - adiPFT1: micro-polydiamond polyester with 4% spandex +/- 110 grs/m<sup>2</sup>
  - adiPFT1-PU: 100% polyester 'PunchLine' +/- 130 grs/m<sup>2</sup>
- Regular-fit cut, V-neck provide kick boxers with total freedom of movement

**Colors:** Red - Blue.

**Sizes:** 100 to 200 cm.

### “Light contact” T-shirt *adiLCT1/adiLCT1-PU*

- Available in two comfortable fabrics:
  - adiLCT1: micro-polydiamond polyester with 4% spandex +/- 110 grs/m<sup>2</sup>
  - adiLCT1-PU: 100% polyester 'PunchLine' +/- 130 grs/m<sup>2</sup>
- Regular-fit cut, round neck provide kick boxers with total freedom of movement

**Colors:** Red - Blue.

**Sizes:** 100 to 200 cm.



### “Point fighting” Pants - *adiPFP1/adiPFP1-PU*

- Available in two comfortable fabrics:
  - adiPFP1: micro-polydiamond polyester with 4% spandex +/- 110 grs/m<sup>2</sup>
  - adiPFP1-PU: micro-polyester 'PunchLine' +/- 130 grs/m<sup>2</sup>
- Large elastic waist-band plus tightening cord, for optimal comfort

**Colors:** Red - Blue.

**Sizes:** 100 to 160 cm - 170cm/M - 180cm/L - 190/XL - 200/2XL.

### “Full contact” Pants - *adiFCP1/adiFCP1-PU*

- Available in two comfortable fabrics:
  - adiFCP1: micro-polydiamond polyester with 4% spandex +/- 110 grs/m<sup>2</sup>
  - adiFCP1-PU: micro-polyester 'PunchLine' +/- 130 grs/m<sup>2</sup>
- Large elastic waist-band plus tightening cord, for optimal comfort

**Colors:** Red - Blue.

**Sizes:** 100 to 160 cm - 170cm/M - 180cm/L - 190/XL - 200/2XL.





GERMAN BOXING TEAM



### Amateur boxing top - *adiBTT02*

- Amateur boxing tank top made from light micro-polyester +/- 130 grs/m<sup>2</sup>
- Comfortable, 100% polyester & spandex materials
- Sleeveless, slim-fit cut, round neck provide boxers with total freedom of movement

**Colors:** Aiba red - Aiba blue - White - Black.

**Sizes:** XXS - XS - S - M - L - XL - XXL.



### Amateur boxing short - *adiBTS02*

- Amateur boxing short made from light micro-polyester +/- 130 grs/m<sup>2</sup>
- Comfortable, 100% polyester & spandex materials
- Ample cut, large elastic waist band
- Total freedom of movement

**Colors:** Aiba red/White - Aiba blue/White - White/Black - Black/White.

**Sizes:** XXS - XS - S - M - L - XL - XXL.







### Boxing short - *adiSMB01*

- Multi-boxing short made from light-weight 100% polyester satin-like fluid fabric +/- 160 g/m<sup>2</sup>
- Large elastic waist-band plus tightening cord, for optimal comfort
- Contrasting white color of belt specially designed for amateur/AOB boxing

**Colors:** Black/White - Aiba red/White - Metallic blue/White - Aiba blue/White.

**Sizes:** XXS - XS - S - M - L - XL - XXL.



### Thai-boxing short - *adiSTH01*

- Thai-boxing short made from polyester satine-alike fabric, weight +/- 140 grs/m<sup>2</sup>
- Comfortable cut, large elastic waist band, tightening cord provide a total freedom of movement and an optimal comfort
- Embroidered logo on waist band

**Colors:** Black/Gold - Black/Red - Black/Shock pink - Blue/Solar yellow - Shock pink/White - Red/Silver - White/Gold - Camo green/Black - Camo white/White.

**Sizes:** XXS - XS - S - M - L - XL - XXL.



### Thai-boxing short - *adiSTH03*

- Thai-boxing short made from polyester satine alike comfortable material, weight +/- 140 grs/m<sup>2</sup>
- Large elastic waist band, tightening cord provide a total freedom of movement and an optimal comfort
- Embroidered logo on waist band

**Colors:** Black/White - Black/Aiba red - Camo/black/Solar orange - Black/White - Black/Shock Pink - Black Shock Yellow - Black/Shock red - Black/Shock Blue - Black/Solar Lime.

**Sizes:** XXS - XS - S - M - L - XL - XXL.











### T-Shirt "WBC" - *adiWBCT05*

- Premium T-shirt, 100% combed cotton
- Weight +/- 180 grs/m<sup>2</sup> - 6 oz
- Direct screenprint at front
- Contrast necktape inside collar

**Colors:** White - Grey - Black.

**Sizes:** (in cm) 116 - 128 - 140 - 152 - 164 - XS - S - M - L - XL - 2XL - 3XL - 4XL.



### T-Shirt "WBC" - *adiWBCT01*

- Premium T-shirt, 100% combed cotton
- Weight +/- 180 grs/m<sup>2</sup> - 6 oz
- Direct screenprint at front
- Contrast necktape inside collar

**Colors:** White - Grey - Black.

**Sizes:** (in cm) 116 - 128 - 140 - 152 - 164 - XS - S - M - L - XL - 2XL - 3XL - 4XL.



### T-Shirt "WBC" - *adiWBCT03*

- Premium T-shirt, 100% combed cotton
- Weight +/- 180 grs/m<sup>2</sup> - 6 oz
- Direct screenprint at front
- Contrast necktape inside collar

**Colors:** White - Grey - Black.

**Sizes:** (in cm) 116 - 128 - 140 - 152 - 164 - XS - S - M - L - XL - 2XL - 3XL - 4XL.



### T-Shirt "WBC" - *adiWBCT06*

- Premium T-shirt, 100% combed cotton
- Weight +/- 180 grs/m<sup>2</sup> - 6 oz
- Direct screenprint at front
- Contrast necktape inside collar

**Colors:** White - Grey - Black.

**Sizes:** (in cm) 116 - 128 - 140 - 152 - 164 - XS - S - M - L - XL - 2XL - 3XL - 4XL.



### T-Shirt "WBC" - *adiWBCTB01*

- Premium T-shirt, 100% combed cotton
- Weight +/- 180 grs/m<sup>2</sup> - 6 oz
- Direct screenprint at front
- Contrast necktape inside collar

**Colors:** Black.

**Sizes:** (in cm) 116 - 128 - 140 - 152 - 164 - XS - S - M - L - XL - 2XL - 3XL - 4XL.



### T-Shirt "WBC" - *adiWBCT04*

- Premium T-shirt, 100% combed cotton
- Weight +/- 180 grs/m<sup>2</sup> - 6 oz
- Direct screenprint at front
- Contrast necktape inside collar

**Colors:** White - Grey - Black.

**Sizes:** (in cm) 116 - 128 - 140 - 152 - 164 - XS - S - M - L - XL - 2XL - 3XL - 4XL.



### T-Shirt "WBC" - *adiWBCT02*

- Premium T-shirt, 100% combed cotton
- Weight +/- 180 grs/m<sup>2</sup> - 6 oz
- Direct screenprint at front
- Contrast necktape inside collar

**Colors:** White - Grey - Black.

**Sizes:** (in cm) 116 - 128 - 140 - 152 - 164 - XS - S - M - L - XL - 2XL - 3XL - 4XL.





### Hoody "WBC" - *adiWBCH05*

- Premium Hoody, 80:20 poly-cotton
- Weight +/- 250 grs/m<sup>2</sup> - 8,8 oz
- Direct screenprint at front
- Contrast necktape inside collar

**Colors:** White - Grey - Black.

**Sizes:** (in cm) 116 - 128 - 140 - 152 - 164 - XS - S - M - L - XL - 2XL - 3XL - 4XL.



### Hoody "WBC" Sleeveless - *adiWBCH07*

- Premium Hoody sleeveless, 80:20 poly-cotton
- Weight +/- 250 grs/m<sup>2</sup> - 8,8 oz
- Direct screenprint at front
- Contrast necktape inside collar

**Colors:** White - Grey - Black.

**Sizes:** (in cm) 116 - 128 - 140 - 152 - 164 - XS - S - M - L - XL - 2XL - 3XL - 4XL.



### Hoody "WBC" - *adiWBCH06*

- Premium Hoody, 80:20 poly-cotton
- Weight +/- 250 grs/m<sup>2</sup> - 8,8 oz
- Direct screenprint at front
- Contrast necktape inside collar

**Colors:** White - Grey - Black.

**Sizes:** (in cm) 116 - 128 - 140 - 152 - 164 - XS - S - M - L - XL - 2XL - 3XL - 4XL.



### Hoody "WBC" - *adiWBCH01*

- Premium Hoody, 80:20 poly-cotton
- Weight +/- 250 grs/m<sup>2</sup> - 8,8 oz
- Direct screenprint at front
- Contrast necktape inside collar

**Colors:** White - Grey - Black.

**Sizes:** (in cm) 116 - 128 - 140 - 152 - 164 - XS - S - M - L - XL - 2XL - 3XL - 4XL.



### Hoody "WBC" Sleeveless - *adiWBCH04*

- Premium Hoody sleeveless, 80:20 poly-cotton
- Weight +/- 250 grs/m<sup>2</sup> - 8,8 oz
- Direct screenprint at front
- Contrast necktape inside collar

**Colors:** White - Grey - Black.

**Sizes:** (in cm) 116 - 128 - 140 - 152 - 164 - XS - S - M - L - XL - 2XL - 3XL - 4XL.



### Hoody "WBC" Sleeveless - *adiWBCH02*

- Premium Hoody sleeveless, 80:20 poly-cotton
- Weight +/- 250 grs/m<sup>2</sup> - 8,8 oz
- Direct screenprint at front
- Contrast necktape inside collar

**Colors:** White - Grey - Black.

**Sizes:** 116 - 128 - 140 - 152 - 164 - XS - S - M - L - XL - 2XL - 3XL - 4XL.



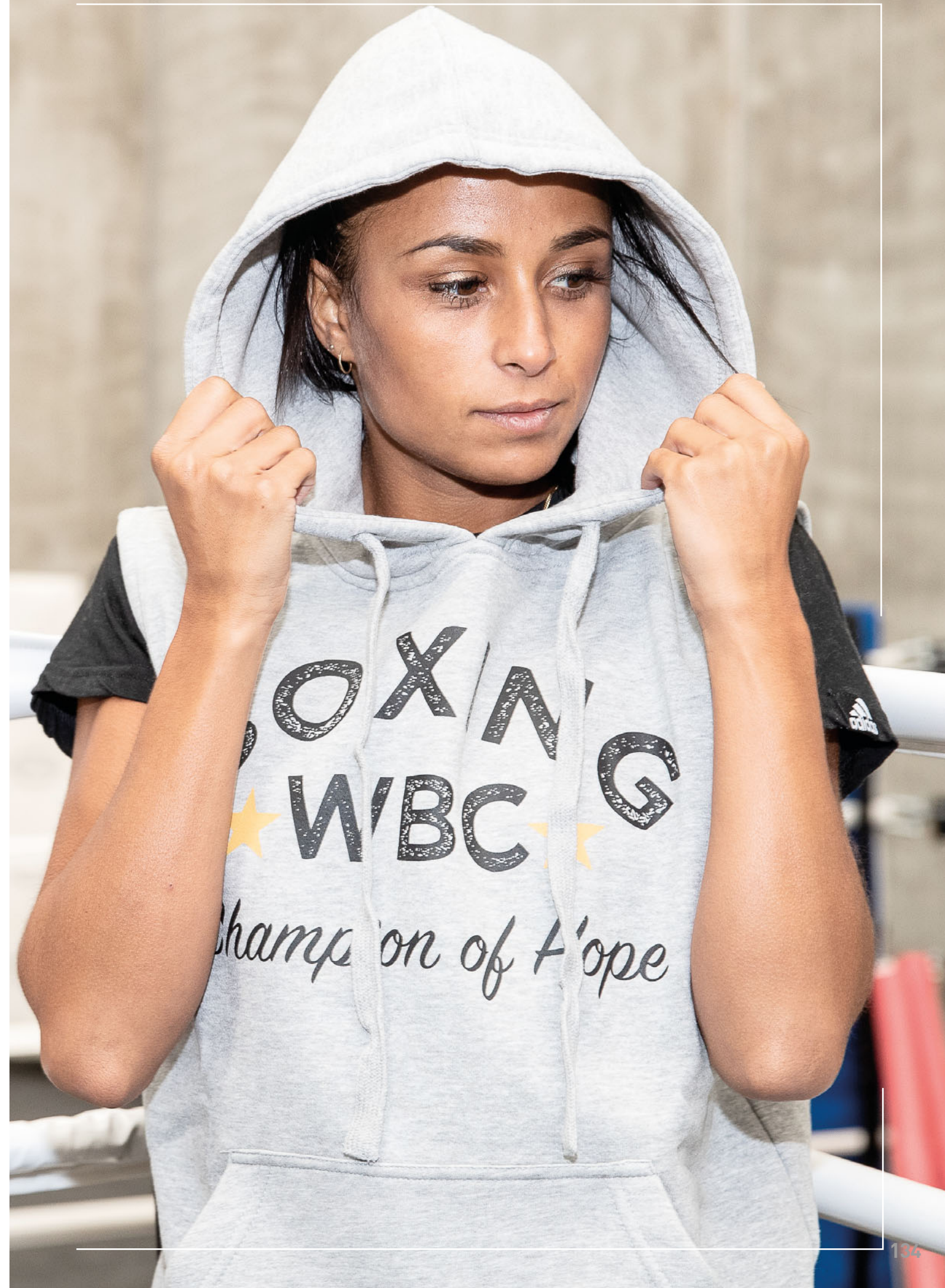


### Sport bag 2 in 1 - adiACC051

- Outer resistant 'PU' material
- Bag convertible into backpack thanks to two shoulder straps stowed inside the bag
- Large opening on top with super-sized plastic zipper
- Strong PU straps at the back with foam-padding for back comfort
- Two nylon/PU handles & shoulder nylon strap to carry the bag
- Side zipper for a quick-opening and to storage shoes or protectors
- Printed logo on side

**Colors:** Black/Gold - White/Gold.

**Sizes:** M (62 x 31 x 31 cm/50 liters) - L (72 x 34 x 34 cm/65 liters).







ABNER **MARES**



FRANCISCO **DEVACA**



WANIK **AWIDJAN**



JAMEL **HERRING**



MAÏVA **HAMADOUCHE**



MERCITO **GESTA**



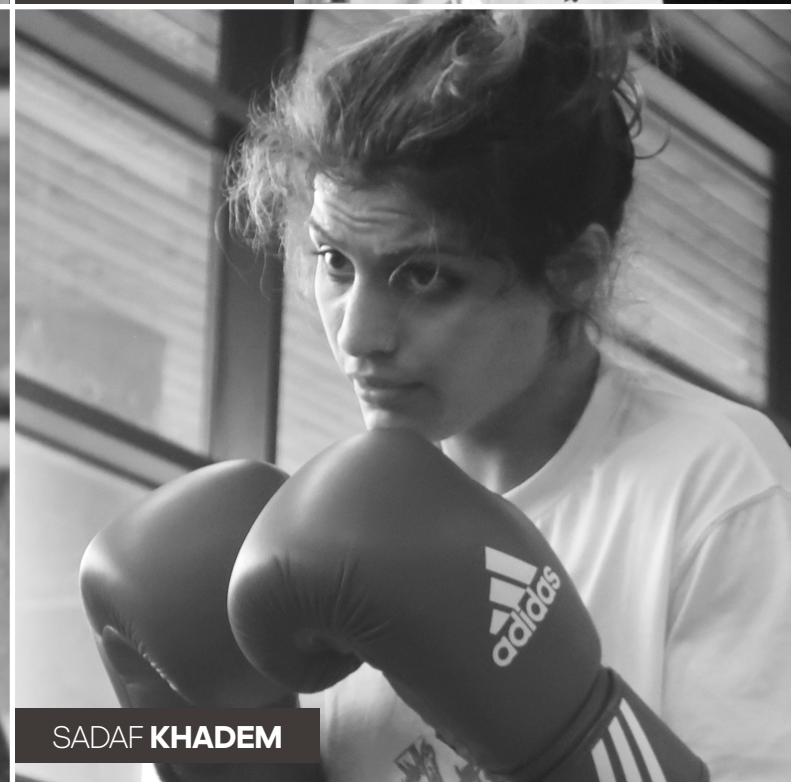
CHARLIE **EDWARDS**



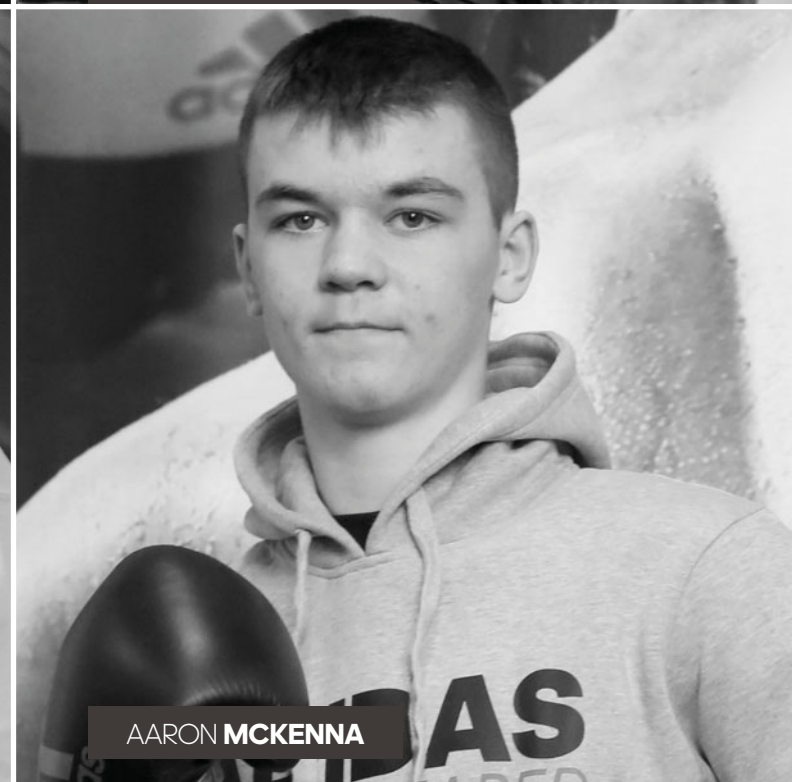
ALYCIA **BAUMGARDNER**



JAI **OPETAIA**



SADAF **KHADEM**



AARON **MCKENNA**



SOFIANE **OUMIHA**





NIKKI **ADLER**



RUBY **TAYLOR**



MIGUEL **BERCHELT**



SHO **KIMURA**



LIAM **WILSON**



LINN **SANDSTROM**



FRANCISCO **OCHOA**



THOMAS « CORNFLAKES » **LAMANNA**



KAYE **SCOTT**



SONNY **FREDRIKSON**



ROBERTO **GARCIA**



ANJA **STRIDSMAN**





KOSEI **TANAKA**

Ranked World #1 in Fly weight  
Current WBO FLY weight Champion!



Kento **Hatanaka**

WBC Youth World Champion