



Here at adidas we are the only Combat Sports brand offering a complete range of training equipment and apparel for the Combat Sports players. All of the adidas product is researched, developed and combat tested by professional athletes... We guarantee it.

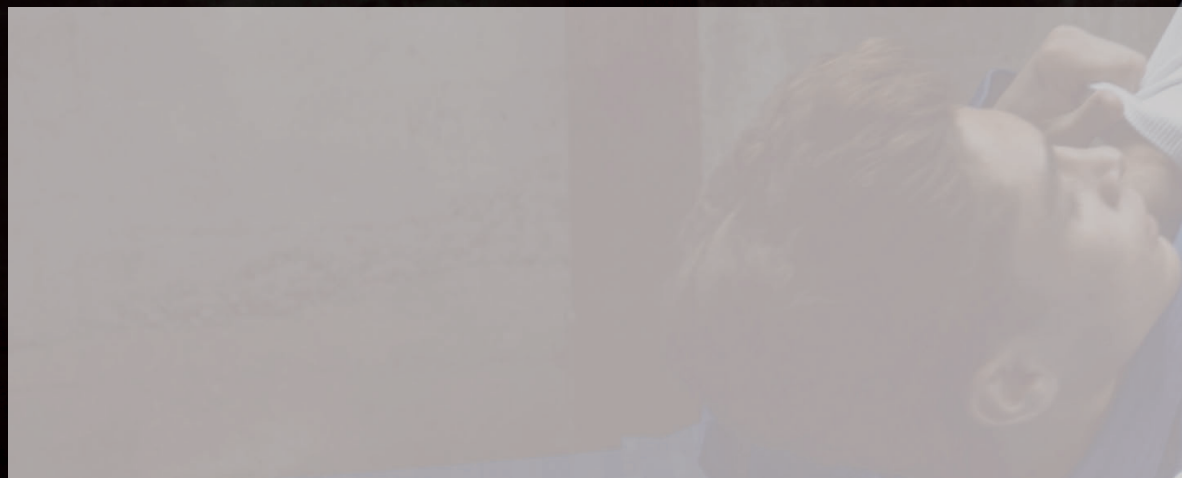
[www.combat-sports.net](http://www.combat-sports.net)

 [combatsportsaddict](https://www.instagram.com/combatsportsaddict)

 [adidas.cs](https://www.facebook.com/adidas.cs)

 [adidascombatsports](https://www.youtube.com/adidascombatsports)

 [cs\\_adidas](https://twitter.com/cs_adidas)



#### DOUBLE D

adidas worldwide licensee martial arts & boxing  
22 allée du 1<sup>er</sup> Mai - 77183 Croissy-Beaubourg - FRANCE  
Tel. +33.1.64.73.00.03 - Fax +33.1.64.73.00.04

© adidas 2020. The 3-Stripes logo and the 3-Stripes mark are registered trademarks of the adidas Group.  
Photo credits: Double D, all rights reserved. Non contractual document : design or color of products contained in this catalog may vary in production. Edition September 2020.

  
**adidas**  
JIU-JITSU



**CATALOG 2020/21**





## CONTEST - JJ430

- IBJJF approved uniform for competitions
- Jacket made of 100% cotton 'pearl weave' brilliant pre-shrunk fabric +/- 450 Grs/m<sup>2</sup> +/- 10 grs
- Trouser made of 65:35 cotton:polyester brilliant riptop pre-shrunk fabric +/- 240 Grs/m<sup>2</sup> +/- 10 grs
- Self-fabric lining located on knees to provide reinforcement & extra durability
- Six belt loops system to keep stretchable drawstrings rope in place
- Reinforced construction extra durable in area are needed most
- Direct embroidered stripes on shoulder and logo on chest and on trouser
- Contrast stitching both on jacket and trouser & inside jacket with sublimated lining

**Colors:** White/Red - Blue/Silver.

**Adults sizes :** A0 - A1 - A1<sup>1/2</sup> - A2 - A2<sup>1/2</sup> - A3 - A4 - A5 - A6.



**GRACIE BARRA**  
OFFICIAL PARTNER





## CHALLENGE - JJ350

- Jacket made of 60:40 cotton:polyester pre-shrunk mixed materials of weight +/- 335 grs/m<sup>2</sup> +/-5 grs
- Thick lapel with single piece of foam
- Trouser made of 60% cotton:40% riptop pre-shrunk fabric +/- 260 grs/m<sup>2</sup> +/-5 grs
- Four belt loops system to keep flat draw cord in place
- Self-fabric lining located on knees to provide reinforcement & extra durability
- Polyester round lace & drawstring located inside trouser for tightening
- Direct embroidered logo on sleeve and on trouser

**Colors:** White/Shock Blue - Bold Blue/Shock Blue/Yellow - Black/White/Yellow.

**Adults sizes :** A0 - A1 - A1<sup>1/2</sup> - A2 - A2<sup>1/2</sup> - A3 - A4 - A5 - A6.

**Kids sizes :** M0 - M1 - M2 - M3.



**GRACIE BARRA**  
OFFICIAL PARTNER





## RESPONSE - JJ280

- Made of ripstop fabric, 60:40 cotton:polyester pre-shrunk mixed materials, weight +/- 260 grs/m<sup>2</sup> +/- 5 grs
- Flat, light and resistant pre-shrunk cloth both on jacket and trousers designed in Brazilian traditional style
- Reinforcement drill material on knees and lapel with single piece of foam padding
- Trousers with «4 loops» and self-fabric drawcord tightening system
- Woven three stripes on shoulders and woven logo on jacket and trouser
- Ideal suit for beginners or as a training suit worn during warm weather conditions

**Colors:** White/Bold Blue/Eqt Yellow - Bold Blue/Shock Blue/Eqt Yellow - Black/White/ Shock Blue.

**Adults sizes:** A0 - A1 - A1<sup>1/2</sup> - A2 - A2<sup>1/2</sup> - A3 - A4 - A5 - A6.

**Kids sizes:** M0 - M1 - M2 - M3.



**GRACIE BARRA**  
OFFICIAL PARTNER





### ROOKIE - JJ250

- Made of 65:35 cotton:polyester mixed materials, weight +/- 200 grs/m<sup>2</sup> +/-5 grs
- Light single weave fabric on all jacket delivering the breathability
- Trouser made of 52:48 cotton:polyester fabric
- Woven stripes on shoulder and woven logo on pant
- Two belt loops system to keeping drawstrings rope in place
- Reinforcements in areas are needed most to ensure durability
- Elastic waistband for an optimized comfort
- Allows ju-jitsu beginners to train with a resistant, ultra-light uniform

**Colors:** White/Shock Blue - Bold Blue/Eqt Yellow - Black/White.

**Adults sizes :** A0 - A1 - A1<sup>1/2</sup> - A2 - A2<sup>1/2</sup> - A3 - A4 - A5 - A6.

**Kids sizes :** M0 - M1 - M2 - M3.





### CLUB belt- *adiJJB-C*

- Mixed material 60% cotton:40% polyester
- 6 rows of stitching, 40 mm width
- Cut'n'cut embroidered adidas patch, plus stitched woven label

**Colors:** White - Blue - Purple - Brown - Black.

**Sizes:** A1 - A2 - A3 - A4 - A5 - A6.



### ELITE belt- *adiJJB-E*

- Mixed material 60% cotton:40% polyester
- 8 rows of stitching, 40 mm width
- Cut'n'cut embroidered adidas patch, plus stitched woven label

**Colors:** White - Blue - Purple - Brown - Black.

**Sizes:** A1 - A2 - A3 - A4 - A5 - A6.



### MASTER belt- *adiJJB-E*

- Mixed material 60% cotton:40% polyester
- 12 rows of stitching, 45 mm width
- Cut'n'cut embroidered adidas patch, plus stitched woven label
- Optional colors (cut'n'cut patch):  
Shiny gold / Brilliant silver / Red / Blue / Pink / Fluo yellow / Green

**Colors:** Brown - Black.

**Sizes:** A1 - A2 - A3 - A4 - A5 - A6.



**GRACIE BARRA**  
OFFICIAL PARTNER





### Short sleeve rash guards - *adiCSR01*

73% polyester/27% spandex, 220gsm  
4 way stretch fabric with moisture wicking

**Colors:** Black/Grey.

**Sizes:** XS - S - M - L - XL - 2XL - 3XL.



### Long sleeve rash guards - *adiCSR02*

73% polyester/27% spandex, 220gsm  
4 way stretch fabric with moisture wicking

**Colors:** Black/Grey.

**Sizes:** XS - S - M - L - XL - 2XL - 3XL.



### Combat short - *adiCSS03*

- 90% polyester/10% spandex
- Super lightweight 92gsm fabric with bonded seams for comfort and quick drying.

**Colors:** Black/Grey.

**Sizes:** 28 to 44.



### Compression combat pant - *adiCSP01*

85% polyester/15% spandex, 180gsm  
4 way stretch fabric with moisture wicking

**Colors:** Black/Grey.

**Sizes:** S - M - L.





OLIVIER MICHAILESCO  
3x IBJJF EUROPEAN CHAMPION  
MESTRE 3<sup>rd</sup> DEGREE MKTEAM ACADEMY